

STANDARD FIVE MID TERM 1 EXAMS-2019

SCIENCE

1. You have been given this question paper and a separate answer sheet. The question paper contains 50 questions.
2. Make sure that you have written on the answer sheet

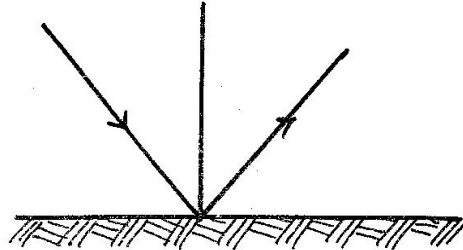
TIME: 1HR 40MINS

(i) Your name

(ii) Name of your school

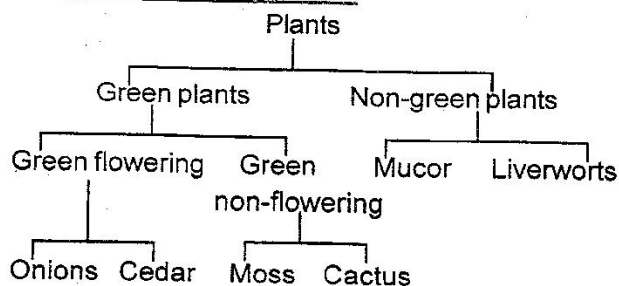
1. Which of the following statement is **true** about venacava? It carries _____.
A. deoxygenated blood
B. blood from the lungs
C. blood under high pressure
D. blood from the heart
2. What is the percentage of carbon dioxide in the air?
A. 78% B. 21%
C. 0.94% D. 0.03%
3. Which one of the following is **not** a sign and symptom of cholera?
A. Vomiting
B. Watery diarrhoea
C. Stomach pains
D. Presence of blood in faeces
4. Which one of the following is **not** a form of rotational grazing?
A. Strip grazing B. Tethering
C. Paddocking D. Herding
5. The second DPT vaccine is given at _____.
A. birth B. 10 weeks
C. 6 weeks D. 9 months
6. The following are functions of roots. Which one is **not**?
A. Holding plants to the soil
B. Making food to the plant
C. Absorbing water
D. Absorbing mineral salts
7. When carrying out an experiment on rising up of water in the soil. Which one of the following should be maintained constant?
A. Type of soil
B. Size of the trough
C. Time taken
D. Collecting jar

8. The diagram below demonstrates _____.

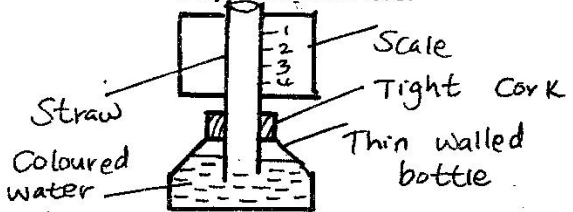


- A. light reflection B. light dispersion
C. light refraction D. light diffusion
9. Below are signs and symptoms of a nutritional deficiency disease.
(i) The child cries alot
(ii) The child looks like an old man or woman
(iii) The child is very weak
(iv) The shape of bones is visible underneath the skin
The nutrition deficiency disease with the above signs symptoms is _____.
A. rickets
B. kwashiorkor
C. marasmus
D. anaemia
 10. The embryo of a seed is made up of _____.
A. plumule and testa
B. cotyledon and plumule
C. radicle and plumule
D. cotyledon and radicle
 11. Three of the following are characteristics of wind pollinated flower. Which one is **not**?
A. Are dull in colour
B. Stigma expose to atmosphere
C. Produce light pollen
D. Produce nectar

Study the chart below

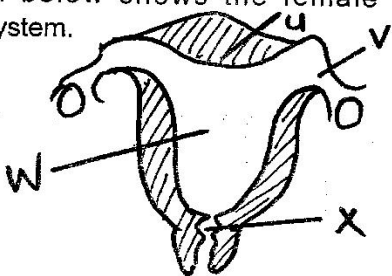


12. Which of the following plants are **wrongly** grouped?
 A. Cedar, mucor, cactus
 B. Cactus, mucor, moss
 C. Cedar, liverwort, cactus
 D. Onion, cactus, mucor
13. The smallest planet and the second biggest are _____ and _____ respectively.
 A. Saturn, Mercury B. Mars, Jupiter
 C. Mercury, Saturn D. Earth, Uranus
14. What would James a class five learner use to lift a heavy stone?
 A. Crowbar B. Handcart
 C. Ladder D. Wheelbarrow
15. The diagram below shows a weather instrument constructed by some learners.



- The instrument failed to work because of _____.
 A. marking the scale
 B. tight cork
 C. glass bottle instead of plastic bottle
 D. straw instead of a glass tube

16. The diagram below shows the female reproductive system.



- The part which has a similar function as the ovary of a flower is labelled _____.
 A. X B. W
 C. U D. V

17. To help a simple air thermometer measure slight changes in temperature. Which of the following should be done?
 A. Mark it in smallest units
 B. Use a thin walled bottle
 C. Use a very narrow tube
 D. Label the scale from bottom to top
18. Which one of the following is **not** a physical change on boys and girls during adolescence?
 A. Voice deepening
 B. Enlargement of breasts
 C. Attraction to the opposite sex
 D. Growth of hair under the armpits
19. Which one is a harmful animal?
 A. Fish
 B. Pig
 C. Termite
 D. Goat
20. Which one of the following components of a balanced diet gives animals energy?
 A. Proteins and fats
 B. Carbohydrates and oils
 C. Fats and vitamins
 D. Proteins and mineral salts
21. One evening, a pupil noticed a bright heavenly body that was not twinkling. The heavenly body was most likely _____.
 A. Saturn B. Venus
 C. Uranus D. Neptune
22. Which one of the following statements is **not true** about commercial feeds for animals?
 A. They are given mainly for protection against diseases
 B. Some are given at the only feed
 C. They are given mainly to increase production
 D. Some are given together with other feeds
23. The following are effects of soil erosion.
 (i) *Small holes on the ground*
 (ii) *Top layer of soil missing*
 (iii) *Small and shallow channels in the ground*
 (iv) *V-shaped trenches in the ground*
 Which effects are as a result of splash and rill types of erosion?
 A. i and iv B. i and iii
 C. ii and iii D. ii and iv

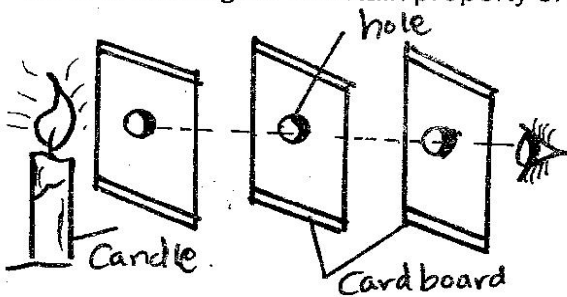
24. Bilharzia can be prevented by _____.
- boiling water before drinking
 - wearing gumboots when walking in stagnant water
 - covering latrines after use
 - draining stagnant water from around the homestead

25. The component of soil that improves its water holding capacity is _____.
- mineral salts
 - air
 - organic matter
 - living organism

26. Which of the following parts of the human breathing system are both involved in warming, cleaning and moistening air?
- Diaphragm and trachea
 - Lungs and diaphragm
 - Nose and lungs
 - Trachea and nose

27. Which one of the following methods of food preservation is both modern and traditional?
- Salting
 - Smoking
 - Drying
 - Using honey

28. The diagram below represents a set-up that is used to investigate a certain property of light.

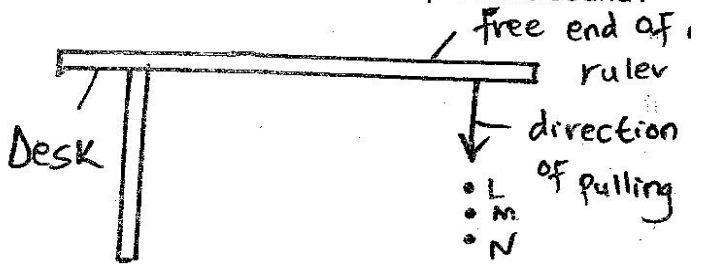


The property investigated is that light _____.

- is refracted
 - travels in a straight line
 - is dispersed
 - does not pass through opaque material
29. When pieces of paper are dispersed above a fire, they rise. This is because _____.
- heat makes the papers lighter than air
 - paper expands when heated
 - hot air carries the paper upwards
 - heat from the fire carries the paper upward
30. Which one of the following are both reasons for lighting a house?
- Safety and discouraging nests
 - Drying and discouraging nests
 - Warming and seeing clearly
 - Safety and warming

31. The reason why some plants have thick waxy cuticle is to _____.
- store manufactured food
 - reduce water loss
 - allow breathing to take place
 - trap more sunlight

32. The diagram below represents a set-up in which a ruler of fixed to a desk and its free end pulled to positions L, M and N. At each position the free end is released to produce sound?



The set-up can be used to investigate _____.

- special sound
 - loud and soft sound
 - direction of sound
 - noise pollution
33. Heat is transferred through vacuum by _____.
- convection and conduction
 - convection only
 - radiation only
 - radiation and conduction
34. Formation of a rainbow can be demonstrated by the following activities **except** when _____.
- observing the sun through a horizontally held transparent biro pen casing
 - placing a mirror in water to face the sun
 - placing a biro pen casing on water in a glass container
 - spraying water in the air from the mouth in bright sunshine
35. The blood vessel through which deoxygenated blood flows from the heart is the _____.
- aorta
 - venacava
 - pulmonary vein
 - pulmonary artery
36. Which of the following **correctly** represents the path taken by food from the oesophagus?
- Stomach → Small intestine → Large intestines → Rectum → Anus
 - Small intestines → Large intestines → Stomach → Rectum → Anus
 - Stomach → Large intestines → Small intestines → Rectum → Anus
 - Large intestines → Stomach → Small intestines → Rectum → Anus

37. Which one of the following components of blood is involved in clotting after an injury?
- Plasma
 - Platelets
 - White blood cells
 - Red blood cells

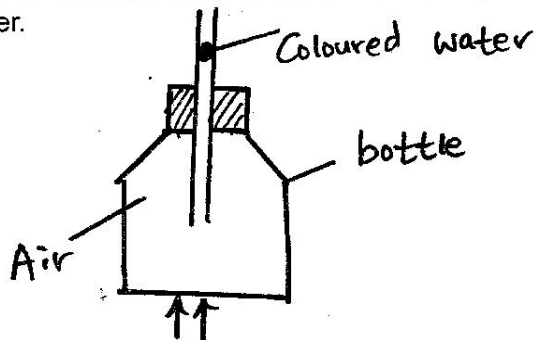
38. The **main** reason why blackjack weed should be uprooted from a vegetable farm when they are still young is _____.

- because it is easy to uproot the weed
- to avoid loss of soil nutrients
- to reduce loss of water
- to control the spread of the weed

39. Which one of the following consists of a pair of plants that can make their own food?

- Cedar and yeast
- Fern and pine
- Toadstool and moss
- Puffballs and mould

40. The diagram below shows a set up that was used to demonstrate a certain property of matter.



The coloured water rises up the straw because _____.

- liquids expand when heated
- liquids occupy space
- air occupies space
- air expands when heated

41. The component that makes up 0.97% of air is used in _____.

- rusting
- electric bulbs
- preservation of soft drinks
- making proteins

42. Which one of the following activities will make an aluminium foil that was floating on water sink?

- Increasing amount of water
- Rolling the aluminium foil into a tube
- Making holes on the aluminium foil
- Crushing the aluminium foil into a ball

43. Which one of the following is a reason why a glass container is **likely** to break if hot water is poured into it?

- Sudden expansion of the inner side of the glass wall
- Sudden expansion of air in the container
- Sudden contraction of the outer side of the glass wall
- The fact that the heated water had expanded

44. The ovary and testis are similar in that both ____.

- are similar in shape
- are parts of the male reproductive system
- produce sex cells
- produce sperms

45. Which one of the following vaccines is administered only once to the child on the lower arm?

- DPT
- Antimeasles
- BCG
- Antipolio

46. On a see-saw a small boy can lift a big boy when _____.

- the small boy stands on it
- the big boy moves closer to the fulcrum
- the two boys interchange positions
- the two boys move equal distances away from the fulcrum

47. Newton is the unit for measuring _____.

- weight
- mass
- pressure
- volume

48. Which one of the following statements above blood vessels in the human body is **correct**?

- All veins carry de-oxygenated blood
- Blood pressure in arteries is higher than in veins
- Arteries have valves that control flow of blood
- Arteries have thinner walls than those of veins

49. Which one of the following effects of drug abuse consists of only social effects?

- Theft and lack of concentration
- Drug induced accidents and truancy
- Rape and withdrawal symptoms
- Drug addiction and loss of consciousness

50. A certain person looked healthy and strong but tested positive for HIV/AIDS. In which one of the following stages of HIV/AIDS was the person **likely** to be?

- Window
- Incubation
- Symptomatic
- Full blown