

STANDARD FIVE MID TERM 1 EXAMS-2019

SCIENCE

- You have been given this question paper and a separate answer sheet. The question paper contains 50 questions.
- Make sure that you have written on the answer sheet

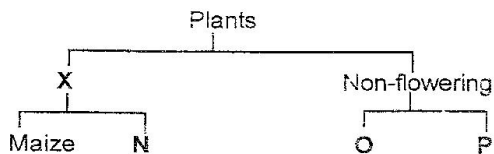
TIME: 1HR 40MINS

(i) Your name

(ii) Name of your school

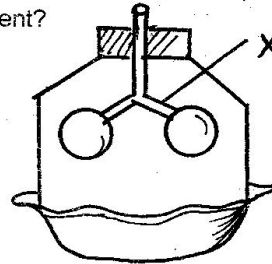
- Gastric juice is found in which part of the digestive system?
 - Mouth
 - Ileum
 - Stomach
 - Gall bladder
- To maintain strong and good healthy teeth, we should do all the following **except**.
 - eat sugary foods
 - visit a dentist regularly
 - brush our teeth after every meal
 - eat a balanced diet
- In the breathing system the nose does one of the following. Which one?
 - Filters the air we breath out
 - Cleans the air we breath in
 - Absorbs the air we breathe in
 - Increases the speed of breathing in
- All weather instruments should be kept in a Stevenson's screen. Which one should be kept outside?
 - Barometer
 - Thermometer
 - Anemometer
 - Hygrometer

Use the classification chart below for questions 5 - 7.



- Which one of the following is represented by X?
 - Flowering
 - Green
 - Non-green
 - Dicot
- All the following are characteristics of plants represented by **N** **except**.
 - have a tap root
 - has two cotyledons
 - has parallel veins
 - has seeds in pods

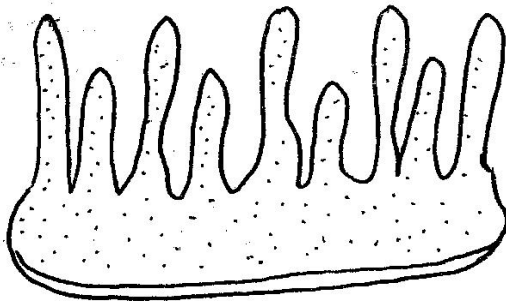
- Give examples of **O** and **P**
 - fen and groundnuts
 - beans and millet
 - fungi and moss
 - bacteria and peas
- Our bodies have many body systems. Which body system does HIV virus destroy?
 - Circulatory system
 - Immune system
 - Digestive system
 - Breathing system
- The diagram below shows a part of a breathing system. What does the part marked X represent?



- Trachea
 - Air sacs
 - Bronchus
 - Bronchioles
- The changes that affect the feelings and behaviour of an adolescent are called _____.
 - physical changes
 - chemical changes
 - emotional changes
 - bodily changes
 - During digestion of food, many chemicals are used to help in digestion. Which of the following chemicals kills germs present in food in the stomach?
 - Saliva
 - Pancreatic juice
 - Gastric juice
 - Hydrochloric acid
 - Which one of the following pairs of processes involves absorption of heat from the surroundings?
 - Condensation and evaporation
 - Freezing and condensation
 - Melting and freezing
 - Evaporation and melting

Std. 5 Scie. 1

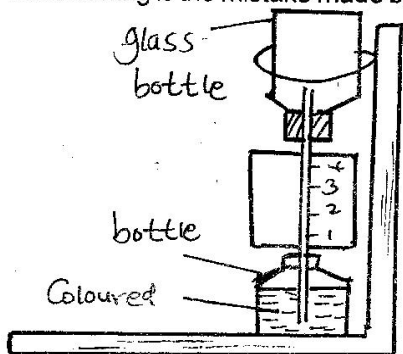
13. The release of eggs every 28 days alternatingly from ovaries is referred to as _____.
- A. menstruation B. ovulation
C. sexual intercourse D. copulation
14. Which of the following male reproductive organs is **incorrectly** matched with its function?
- A. Testes - Produce semen
B. Penis - Deposits sperms in the fallopian tube
C. Urethra - Passage of semen as well as urine
D. Sperm duct - Passage of sperms from the testes to the urethra
15. The diagram below shows a part of the digestive system.



- Which one of the following is the function of the part shown above?
- A. Helps in absorbing digested food
B. Produce intestinal juice
C. Completes the process of digestion
D. Absorbs water and mineral salts
16. Asha covered a leafy branch of a potted plant with a dry polythene bag. She later observed water droplets forming inside the polythene bag after leaving the set up in the hot sun for sometime. Water droplets appeared in the polythene bag due to _____.
- A. transpiration and condensation
B. evaporation and condensation
C. photosynthesis and evaporation
D. evaporation and saturation
17. The following are different types of roots. Which one of them is found in the onion plants?
- A. Fibrous roots B. Adventitious roots
C. Prop roots D. Tap roots

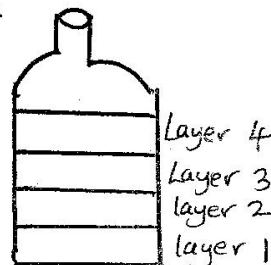
18. From the following groups of animals, choose the one that consists of mammals only.
- A. Bat, squirrel, tortoise, porcupine
B. Whale, rabbit, bat, kangaroo
C. Whale, hedgehog, owl, salamander
D. Elephant, python, lion, antelope
19. The quantity of matter in an object is called ____.
- A. mass B. volume
C. density D. weight
20. All the following materials transmit sound at different rates. Through which one of them is the transmission of sound poorest?
- A. Metal B. Wood
C. Air D. Water
21. The following are weather instruments. Which one of them **does not** work on the fact that matter occupies space?
- A. Raingauge B. Air thermometer
C. Windvane D. Windsock
22. In a box guitar high sound can be produced without changing the tension of the strings by _____.
- A. plucking the strings hard
B. using thinner strings
C. increasing size of the box
D. increasing the lengths of the strings
23. In the making of an improvised windvane, what is the reason for using a biro pen cap as pivot. It is to make the arrow _____.
- A. rotate freely
B. balance on the stand
C. heavy than head
D. tail show the direction accurately
24. Which one of the following groups consists of only foodstuffs that are used for body building and repair?
- A. Rice, oranges, meat
B. Wheat, maize, fish
C. Beans, potatoes, groundnuts
D. Eggs, peas, milk

25. Standard six pupils made a mistake in the construction of the instrument shown. Which of the following is the mistake made by the pupils?



- A. Closing the mouth of the coloured water bottle with air tight cork
 B. Using coloured water
 C. Using a long straw
 D. Having the scale reading from bottom to top
26. When you weigh one kilogram of salt and one kilogram of feathers you notice that _____.
- A. the salt has more mass than the feathers
 B. the salt has less mass than the feathers
 C. the salt and the feathers have the same mass
 D. the salt and the feathers have different masses
27. The following were reasons given by pupils to explain why smoke rises.
- (i) *Has hot air in it*
 (ii) *Is less dense*
 (iii) *Has particles suspended in air*
 (iv) *Is cloudy*
- Which two reasons are correct?
- A. i and ii
 B. ii and iii
 C. iii and iv
 D. i and iv
28. John sat on the see-saw at point P while Mary sat at point Q. The see-saw tilted lifting Mary up. Which of the following should Mary do in order to balance with John?
- A. Move nearer the fulcrum
 B. Remain at Q and press the seesaw downwards
 C. Move the fulcrum closer to himself
 D. Move further away from the fulcrum

29. A group of learners filled a transparent bottle with soil and water. They shook the bottle and left it to stand for sometime. Layers formed as shown below.

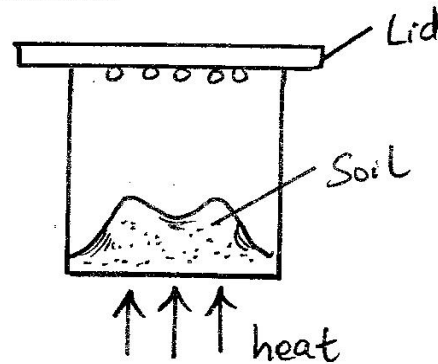


The layer that is composed of water mainly is _____.

- A. 1
 B. 2
 C. 4
 D. 3
30. The rate at which different types of liquids evaporate is affected by many factors. Which one of the following factors does not affect the rate of evaporation of a liquid?
- A. Amount of liquid
 B. Temperature
 C. Surface area
 D. Air movements
31. A small amount of water was put in a tin can and heated to boiling. The tin was then closed tightly and left to cool. The experiment was to demonstrate that air _____.
- A. occupies space
 B. exerts pressure
 C. has weight
 D. contracts on cooling
32. Which one of the following statements is true about all the insects? They _____.
- A. breath through gills
 B. have two body parts
 C. have wings
 D. have three body parts
33. The following are factors that affects solubility of solids in a liquid except.
- A. amount of the solid
 B. size of containers
 C. amount of liquid
 D. temperature of liquid
34. One of the following materials has a definite volume and does not have a definite shape. Which one?
- A. Stone
 B. Air
 C. Sand
 D. Kerosene
35. Which one of the following need not be the same when comparing capillarity in different types of soil?
- A. Diameter of the tubes
 B. Amount of each type of the soil
 C. The allowed for the experiment
 D. Amount of water used

36. Kioko chewed a piece of meat for sometime and then swallowed it. At which part of his digestive system did the digestion of the meat start?
- A. Mouth
B. Colon
C. Ileum
D. Stomach
37. Sperms and urine pass through the _____ to the outside of the male body.
- A. urethra
B. testes
C. scrotum
D. sperm duct
38. All the following are signs and symptoms of malaria **except**.
- A. rise in body temperature
B. shivering and pain in the joints
C. headache, vomiting and diarrhoea
D. severe coughing and chest pains
39. Which one of the following is the function of the pancreas? It _____.
- A. absorbs digested food
B. produces digestive juice
C. absorbs water
D. store digested food
40. Calcium as a mineral salt is needed by the body for the formation of _____.
- A. smooth skin
B. digestive juices
C. strong bones and teeth
D. blood
41. In the human breathing system, where does the exchange of gases take place?
- A. Nostrils
B. Trachea
C. Air sacs
D. Bronchioles
42. Reptiles and amphibians are different **mainly** because _____.
- A. reptiles lay eggs
B. amphibians are cold blooded
C. reptiles have backbone
D. reptiles have scales
43. Window period refers to _____.
- A. a six months period after infection
B. the time the body takes to produces antibodies to fight HIV
C. the time the body takes to eliminate antibodies that fight HIV
D. the stigmatization stage

44. Which one of the following **correctly** shows where sperms and ova are produced from respectively?
- A. Testes, ovaries
B. Ova, testes
C. Testes, uterus
D. Sperm duct, ovaries
45. Standard 6 pupils carried out the experiment shown below.



From the experiment, the pupils concluded that soil has _____.

- A. humus
B. air
C. water
D. animals
46. The following are uses of water. Which one is an industrial use of water?
- A. Cleaning took after use
B. Watering animals
C. Mixing chemicals
D. Formation of fountains
47. A standard four pupil was asked by his teacher to give three examples of fibre crops. Which list below was **correct**?
- A. Flax, coconut, sisal
B. Cotton, flax, sisal
C. Sunflower, tea, cotton
D. Sisal, flax, sunflower
48. All the following are protective clothing put on when spraying chemicals. Which one is **not**?
- A. Gumboots
B. Gloves
C. Goggles
D. Vest
49. The following are maintenance practices carried out on a jembe **except**.
- A. Replacing broken handles
B. Sharpening it when blunt
C. Making the jembe firm in the handle
D. Oiling and greasing to reduce friction
50. The **best** method of controlling weeds on a maize plantation is by _____.
- A. digging them out
B. slashing
C. mulching
D. using chemicals