

# STANDARD 6 END TERM 1 EXAM 2019

## SCIENCE

Time: 1hr 40min

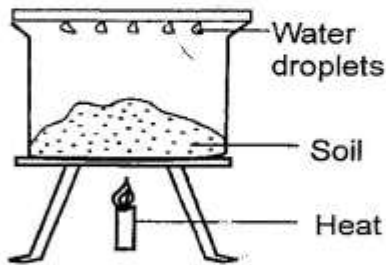
1. Which of the following is **not** a function of a molar?
 

A. Tearing	B. Crushing
C. Grinding	D. Chewing
2. Water is absorbed in the \_\_\_\_\_ of the alimentary canal.
 

A. mouth	B. stomach
c. small intestines	D. colon
3. The chief source of both heat and light is
 

A. electricity	B. sun
C. moon	D. fire
4. A nail sink in water while a feather float. This is due to their
 

A. shape	B. material
C. size	D. weight
5. Study the diagram below.



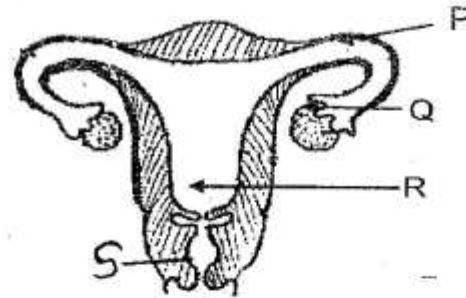
The component of soil being investigated is the presence of

- |                      |                  |
|----------------------|------------------|
| A. water in the soil | B. soil has air  |
| C. water has soil    | D. humus in soil |
6. Which of the following is a communicable disease?
 

A. rickets	B. Anaemia
C. polio	D. tuberculosis
  7. Which of the following is **not** a characteristics of an insect pollinated flower?
 

A. Coloured petals	B. Feathery stigma
C. Sticky stigma	D. Few pollen grains

8. Study the diagram below and then answer the questions.



Fertilization occur in part marked?

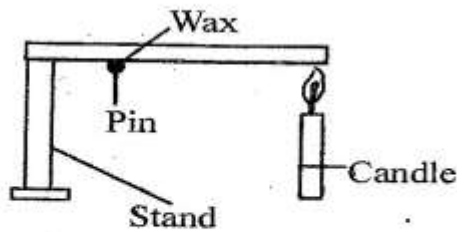
- |      |      |
|------|------|
| A. P | B. Q |
| C. R | D. S |
9. The part that produces the female sex cells is labelled
 

A. P	B. S
C. Q	D. R
  10. Which animals are correctly classified?
 

<u>Vertebrates</u>	<u>invertebrates</u>
A. Snake	Bat
B. Sunbird	Worm
C. Tilapia	Dog
D. Spider	Crab
  11. Which of the following diagrams represents the shape the moon that is invisible?
 

A.	B.
C.	D.

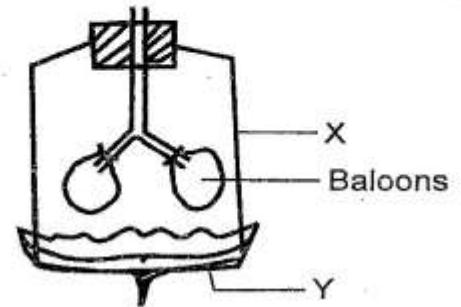
12. A pin was fixed one end of a metal strip using candle wax. The metal was heated as shown below.



After few minutes the pin dropped. The correct conclusion was that the

- A. the metal strip conducted heat  
 B. the pin was near the fire  
 C. candle wax acted as an insulator  
 D. the metal strip expanded when heated
13. The tiny hairs that are found in the nose are important because they
- A. moisten the air  
 B. make the nose beautiful  
 C. trap dust particles and tiny things from entering the nose  
 D. warms the air.
14. The best method of controlling weeds is by
- A. using herbicides  
 B. digging them out  
 C. uprooting  
 D. slashing
15. Which of the following is **not** a problem related to teeth?
- A. Swollen tongue      B. Bleeding gums  
 C. Bad breath          D. Dental carries
16. Which fluid given below is not likely to have HIV and AIDS virus?
- A. Semen                  B. Urine  
 C. Saliva                  D. Blood
17. Below is a description of a cloud.
- (i) *low in the sky*  
 (ii) *rain bearing cloud*  
 (iii) *dark grey in colour*
- The cloud described above is likely to be
- A. cirrus                  B. stratus  
 C. nimbus                D. cumulus

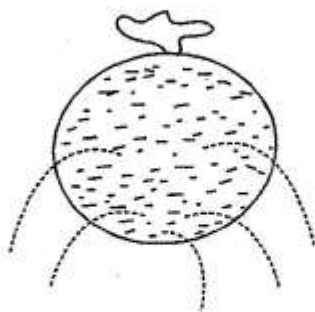
18. After pollination in a flower all the following parts will fall off **except**:-
- A. petals                  B. sepals  
 C. stigma                  D. anthers
19. Use the diagram to answer questions 19 and 20.



The part marked Y can be made using all the following materials **except**:-

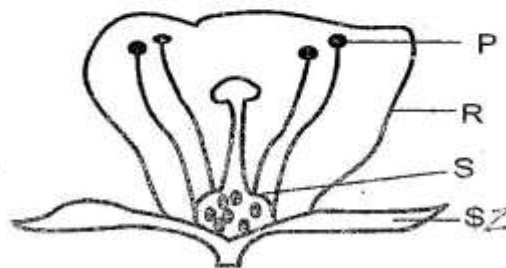
- A. polythene paper      B. balloon  
 C. rubber sheet        D. cotton cloth
20. What happens when part Y is pulled down?
- A. air gets out  
 B. Air gets in and balloon inflates  
 C. Balloons become small  
 D. Part X decreases in size.
21. The following are ways of maintaining simple tools which one is **not**?
- A. Use tools for the right purpose  
 B. Sharpening cutting tools  
 C. Cleaning tools after use  
 D. Painting tools after use
22. Medicine are used properly for all the following **except**:-
- A. to relieve pain  
 B. to supplement body vitamins and mineral salts  
 C. to enables us to sleep comfortably  
 D. to prevent diseases
23. Which one of the following characteristics is **not true** about both plants and animals?
- A. they make their own food  
 B. they grow  
 C. they excrete  
 D. they feed
24. Moses and Lichens are examples of
- A. flowering plants  
 B. non green plants  
 C. non flowering plants  
 D. green flowering plants

25. Which of the following is **not** a reason for lighting a house properly?  
 A. To avoid accidents  
 B. To keep the house warm  
 C. To read comfortably  
 D. To discourage pests
26. Which component of soil is **not** seen?  
 A. Air and humus  
 B. Living organism and water  
 C. Water and air  
 D. Mineral particles and air
27. Which of the following is **not** a use of water for domestic use?  
 A. Washing utensils    B. Watering flowers  
 C. Drinking            D. Ferrying people
28. Stomach has the following functions in digestion **except**:-  
 A. mixing food  
 B. producing gastric juice  
 C. digesting food  
 D. storing bile juice
29. Which type of food is recommended for a person who is unable to empty his bowel  
 A. carbohydrates and much water  
 B. proteins and water  
 C. vitamins and much water  
 D. food rich in fibres
30. From the diagram below we can conclude that



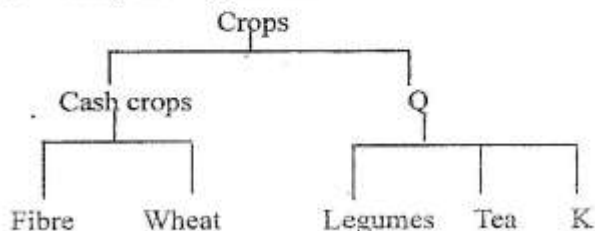
- A. liquids exert pressure in one direction  
 B. liquids exert pressure in all direction  
 C. pressure in liquids increases with depth  
 D. pressure in liquids is equal at same depth
31. Sound travels best in  
 A. liquids                      B. solids  
 C. gases                        D. vacuum

32. Standard weights are metals that  
 A. measure weight  
 B. measure kilometres  
 C. measure mass of an object  
 D. measure height of an object
33. Which of these is **not** an artificial source of light?  
 A. Electricity            B. Candle  
 C. Sun                      D. Lamp
34. Below is a diagram of a flower use it to answer question 34 and 35.



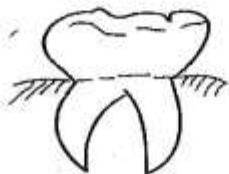
The **main** function of part R is to?

- A. produce pollen grains  
 B. be coming a fruit  
 C. attract insects  
 D. receives pollen grains
35. Pollen grains are produced in part marked?  
 A. P                            B. Q  
 C. S                            D. Z
36. Which soil will produce most bubbles when mixed with water?  
 A. Sand                      B. Loam  
 C. Clay                        D. Silt
37. Tooth cavity is a tooth problem that is caused by  
 A. sugary food            B. acid  
 C. much salts              D. bad breath
38. Study the diagram below.



Which two crops are **wrongly** classified?

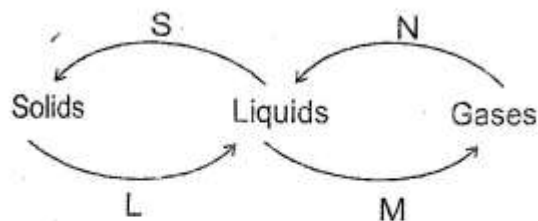
- A. Wheat and legumes
  - B. Tea and fibre
  - C. Fibre and legumes
  - D. Tea and wheat
39. Crop K is **likely** to be
- A. coffee                      B. maize
  - C. cotton                      D. palm
40. Which one of the following foods consists of a balanced diet?
- A. Milk, mutton, eggs
  - B. Chapati, eggs, meat
  - C. Rice, peas, cabbages
  - D. Cooking oil, kales, cabbages
41. Below is a type of tooth.



The tooth above has all the following description except:-

- A. are twelve in number
  - B. have uneven ridges
  - C. have two roots
  - D. are used for grinding
42. Which one is **not** an importance of lighting a house?
- A. To see clearly.
  - B. To read comfortably
  - C. To keep it warm.
  - D. To discourage pests.
43. Clouds are classified according to all of the following **except**:-
- A. height                      B. size
  - C. shape                      D. appearance
44. When investigating capillarity, in soil what should **not** be the same?
- A. amount of the soil
  - B. size of the straw
  - C. size of cotton wool
  - D. type of soil

45. The diagram below shows changes in matter.



Which process requires increase of temperatures?

- A. S and N
  - B. L and M
  - C. M and N
  - D. S and L
46. A child with whitish finger nails, tongue and eyes is **likely** to have
- A. typhoid                      B. anaemia
  - C. kwashiorkor                D. marasmus
47. The process of providing the body with necessary substances in the body is known as
- A. balanced diet
  - B. nutrients
  - C. nutrition
  - D. body building
48. Most pans of cooking utensils are made of wood because wood
- A. is a good insulator
  - B. is a bad insulator
  - C. is a good conductor
  - D. is cheap
49. Heat from the sun reaches the earth surface by
- A. convection and conduction
  - B. radiation and radiation
  - C. radiation only
  - D. convection and radio
50. Which of the following farm animal provides milk and mutton?
- A. Goat                      B. Sheep
  - C. Cow                      D. Carmel