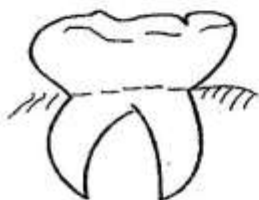


STANDARD 5 END TERM 1 EXAM 2019

SCIENCE

Time: 1hr 40min

1. Which one of the following is not a way of protecting one self from HIV/AIDS
- A. Avoid sharing cutting instruments
 - B. Avoid contact with fresh blood
 - C. Say yes to unprotected sex
 - D. All blood should be screened before transfusion
2. The tooth shown below is used for



- A. grinding and crushing
 - B. cutting and biting
 - C. crushing and tearing
 - D. biting and tearing
3. Which one of the following parts of the breathing system is **not** correctly matched with its function?
- A. Trachea - connects the nose to the bronchus
 - B. Diaphragm - moves up and down to create a space for air in the lungs
 - C. Nose - absorbs the air
 - D. Ribs - protects the lungs .
4. Undigested of materials is released from the body through the anus. This process is called
- A. ingestion
 - B. egestion
 - C. digestion
 - D. excretion
5. What is the main use of a medicine kit or cupboard in our houses?
- A. To decorate the house
 - B. To label the medicine
 - C. To lock away the medicine
 - D. To prevent medicine from being stolen

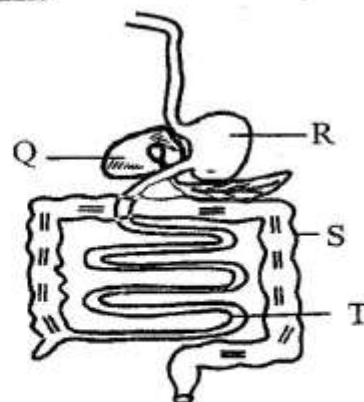
6. The following are description of a certain type of clouds.

- (i) they are white in colour
- (ii) they have a feathery appearance
- (iii) they have a flat base
- (iv) they are high in the sky

The clouds described are **likely** to be

- A. cirrus
- B. stratus
- C. cumulus
- D. nimbus

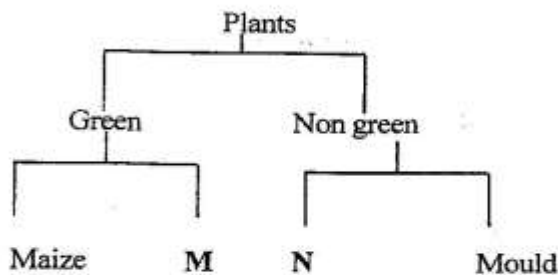
Study the diagram below and use it to answer questions 7-9.



7. Absorption of water and minerals salts takes place in the part marked?
- A. Q
 - B. S
 - C. T
 - D. R
8. Label the parts R,S,T respectively
- A. Ileum, stomach, colon
 - B. Colon, Ileum, stomach
 - C. Colon, stomach, ileum
 - D. Stomach, colon, ileum
9. Part Q produces a digestive juice called
- A. bile
 - B. pancreatic
 - C. saliva
 - D. gastric
10. The roughness or smoothness of a soil is called
- A. soil drainage
 - B. water retention
 - C. soil capillarity
 - D soil texture

11. Which one of the following statements is **not** correct about medicine?
 - A. medicines are used to prevent disease
 - B. medicines are used to cure diseases
 - C. medicines should be taken in excess to speed up recovery period
 - D. medicines are used to relieve pain
12. When breathing in, the diaphragm
 - A. moves upwards
 - B. flattens
 - C. becomes dome shaped
 - D. relaxes
13. Chicken that are kept at home for meat production are called
 - A. broilers
 - B. layers
 - C. cocks
 - D. poultry
14. All the following organisms are found in the soil **except**:-
 - A. moles
 - B. safari ants
 - C. grasshopper
 - D. earth worms
15. A simple machine that is used for climbing walls and trees is called
 - A. see saw
 - B. wheelbarrow
 - C. crowbar
 - D. ladder
16. Rainfall is measured in units called
 - A. millimetres
 - B. litres
 - C. millilitres
 - D. decilitres

Study the classification chart below and use it to answer question that follow.



17. Which plants can represent M and N respectively?
 - A. toadstool and moss
 - B. liverworts and mushrooms
 - C. grass and cactus
 - D. lichens and moss

18. Which one of the following is not a characteristics of the plant marked N?
 - A. It is a flowering plant
 - B. It cannot make its own food
 - C. It does not contain chlorophyll
 - D. It does not reproduce by means of seed
19. The following are functions of the stem in a plant. Which one is **not**?
 - A. Transport water and minerals salts
 - B. Protects the plant
 - C. Stores food
 - D makes food for the plant
20. The second stage of HIV infection is called
 - A. window stage
 - B. symptomatic stage
 - C. symptomatic stage
 - D. full blown stage
21. Which one of the following is **not** a use of water in the farm?
 - A. irrigation
 - B. mixing chemicals
 - C. watering animals
 - D. cooking
22. The following are functions of the tiny hairs and mucus that are found in the nose. Which one is **not**?
 - A. trap dust and small insects
 - B. to moisten the air
 - C. to keep the nose open
 - D. to warm the air
23. A class 5 pupils the experiment below to investigate a certain component of the soil.



- She concluded that soil has
- A. water
 - B. humus
 - C. living things
 - D. air

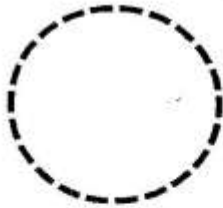
24. All the following are ways of caring for and maintaining simple tools except:-
 A. sharpening cutting tools
 B. throwing them away when they break
 C. cleaning them after use
 D. using tools for the right purpose

25. ___ is a flying mammal
 A. bird
 B. bat
 C. duck billed platypus
 D. seas

26. Which one of the following is **not** a way of lighting a house
 A. using lanterns
 B. using large windows
 C. using the moon
 D. using electricity

27. The **best** way of controlling weeds in a large farm is
 A. using chemicals
 B. digging them out
 C. uprooting
 D. mulching

28. The phase of the moon drawn below is



- A. crescent B. full moon
 C. new moon D. fibbous

29. The date before which a given medicines should be used is called
 A. manufacturing date
 B. dosage date
 C. due date
 D. expiry date

30. Which one of the following is green a non flowering plant?
 A. mushroom B. fern
 C. grass D. yeast

31. One can get AIDS through
 A. shaking hands
 B. sharing desks
 C. sharing books
 D. sharing razor blades and tooth brushes

32. Mammals and birds are
 A. covered with feathers
 B. warm blooded
 C. covered with hair or fur
 D. cold blooded

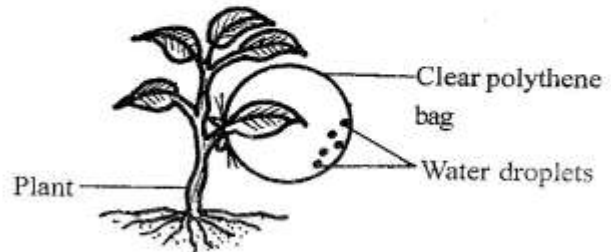
33. During breathing, the exchange of gases takes place in the
 A. air sacs B. diaphragm
 C. oesophagus D. nose

34. Which one of the following factor does not affect floating and sinking?
 A. size B. material
 C. weight D. shape

35. Which one of the following is not a way of maintaining strong teeth?
 A. Drinking alot of milk
 B. Eating a balanced diet
 C. Visiting a dentists regularly
 D. Eating a lot to chocolates and sweets

36. A weed that has purple flowers, thorns on the leaves and stems, yellow fruits when ripe is
 A. oxalis B. sodom apple
 C. thorn apple D. pigweed

37. Which function of the leaves is investigated using the experiment below.



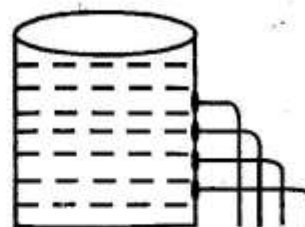
- A. respiration B. storage
 C. transpiration D. photosynthesis

38. Which one of the following is **not** a protective gear to be worn when spraying chemicals?
 A. overall B. goggles
 C. disposable gloves D. vests
39. The following pupils carried packed lunch to school. Who ate proteins only?
 A. **Jane**- eggs, sausages and ugali
 B. **Elvis** - Chips, biscuits and queen cake
 C. **Andrew** - beans, milk, sausages
 D. **Benson** - oranges, spinach, ugali
40. Which one of the following birds cannot fly.
 A. Chicken B. Ostrich
 C. eagle D. sparrow
41. Which one of the following is not an example of cash crop
 A. Beverage B. Fibre
 C. Oil D. Cereals
42. Which one of the following statements is **true** about all insects?
 A. They have two body parts
 B. They cause diseases
 C. They have eight legs
 D. They have three pairs of legs
43. The animal drawn below protects itself by.



- A. coiling B. hiding in its shell
 C. biting D. stinging
44. The following are uses of heat energy which one is **not**?
 A. For ironing clothes
 B. Warming ourselves
 C. Lighting a house
 D. Cooking food

45. Bile and pancreatic juice mix with food in the
 A. liver
 B. stomach
 C. duodenum
 D. small intestines
46. The experiment below can be used to demonstrate the fact that



- A. pressure in liquids increases with depth
 B. pressure in liquids decreases with depth
 C. water can pass through holes
 D. pressure in liquids is exerted in all directions
47. Green plants make their own food through a process called
 A. respiratory
 B. photosynthesis
 C. chlorophyll
 D. transpiration
48. The **main** source of heat and light on earth is
 A. electricity B. sun
 C. moon D. fire
49. Which one of the following is **not** an oil crop
 A. sunflower B. simsim
 C. cassava D. coconut
50. Which animal below is correctly matched with its products?
 A. Goats- wool and mutton
 B. Cattle - milk and mutton
 C. Pigs- pork and milk
 D. Sheep - wool and meat