

EMBU COUNTY PRE - MOCK EXAMS

STANDARD EIGHT - YEAR 2019

SCIENCE

Time : 1 Hour 40 Minutes

READ THESE INSTRUCTIONS CAREFULLY

1. You have been given this question booklet and a separate answer sheet. The question booklet contains 50 questions.
2. Do any necessary rough work in this booklet.
3. When you have chosen your answer, mark it on the **ANSWER SHEET**, not in this question booklet.

HOW TO USE THE ANSWER SHEET

4. Use an ordinary pencil only.
5. Make sure that you have written on the answer sheet.
YOUR INDEX NUMBER
YOUR NAME
NAME OF YOUR SCHOOL
6. By drawing a **DARK LINE** inside the correct numbered brackets mark your full Index Number (i.e. School Code Number and three- figure Index Number) in the grid near the top of the answer sheet.
7. Do not make any marks outside the brackets.
8. Keep the sheet as clean as possible and do not fold it.
9. For each of the questions 1 - 50 four answers are given. The answers are lettered A, B, C, D. In each case only **ONE** of the four answers is correct. Choose the correct answer.
10. On the answer sheet the correct answer is to be shown by drawing a dark line inside the box in which the letter you have chosen is written.

Example:-

In the question Paper:

4. Which one of the following is **NOT** a good reason for taking drugs?

- A. To reduce tension
- B. To treat or cure diseases
- C. For the fun of it
- D. To help prevent diseases

The correct answer is C. (For the fun of it).

On the answer sheet:

1. [A] [B] [C] [D] 4. [A] [B] [C] [D] 12. [A] [B] [C] [D] 28. [A] [B] [C] [D] 40. [A] [B] [C] [D]

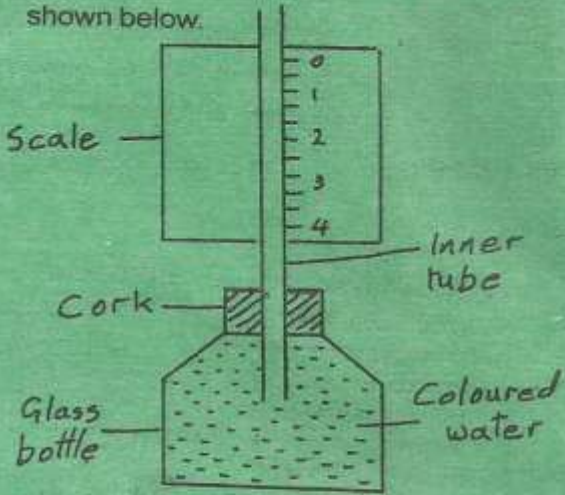
In the First set, the box with the letter C printed in it is marked.

11. Your dark line **MUST** be within the box.
12. For each question **ONLY ONE** box is to be marked in each of four boxes.

This Question Paper consists of 6 pages

Candidates should check the question paper to ensure that all the pages are printed and no questions are missing.

TURN OVER

1. When air passes through the nose, it is **not**
 - A. cleaned
 - B. dried
 - C. warmed
 - D. moistened
2. Which one of the following is **not** a source of light?
 - A. Moon
 - B. Firefly
 - C. Star
 - D. Sun
3. Which one of the following material is magnetic?
 - A. Copper
 - B. Aluminum
 - C. Nickel
 - D. Wood
4. Newton is unit for measuring?
 - A. Mass
 - B. Volume
 - C. Pressure
 - D. Weight
5. The purpose of salt in food preservation is
 - A. remove water
 - B. add flavour
 - C. remove air
 - D. lower temperature
6. Which one of the following animals is a harmful animal?
 - A. Cat
 - B. Fish
 - C. Rat
 - D. Dog
7. Which one of the following consists of **only** green non - flowering plants?
 - A. Moss, tomato, cedar
 - B. Pine, cedar, cypress
 - C. Cassava, cactus, carrots
 - D. Algae, maize, puffball
8. The following are feeding relationships observed in a certain habitat. Letter J can be represented by
Cabbage → aphids → J → lizard
 - A. snake
 - B. ladybird
 - C. weaver bird
 - D. eagle
9. Which one of the following is a characteristic of cumulus clouds?
 - A. Dark grey in colour
 - B. Rain bearing
 - C. Appears like bundle of cotton
 - D. Low in the sky
10. One of the following parasites destroys wool in sheep. Which one is it?
 - A. Ticks
 - B. Lice
 - C. Flea
 - D. Mite
11. Pupils constructed weather instrument shown below.

 - A. using coloured water
 - B. using narrower tube
 - C. closing the cork tightly
 - D. placement of the scale

12. Which one of the following soil components is least affected when soil in a container is heated?

- A. Mineral salts
- B. Air
- C. Organic water
- D. Water

13. The leaf of a cactus plants

- A. stores water
- B. reduces water loss
- C. makes plants food
- D. allows gaseous exchange

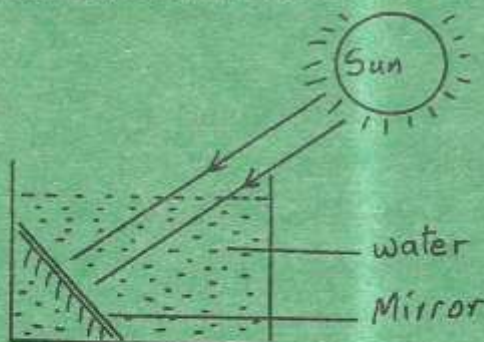
14. In the human body water is absorbed in the

- A. large intestine
- B. stomach
- C. rectum
- D. small intestine

15. Which of the following disease is both communicable and immunisable disease?

- A. Malaria
- B. Typhoid
- C. Tuberculosis
- D. Measles

16. The diagram below shows a set up used to investigate a certain aspect of light.



Which aspect was being investigated?

- A. Reflection of light
- B. How light travels
- C. Refraction
- D. Making of a rainbow

17. Farmers provide artificial fertilizers in the soil to :-

- A. improve soil structure
- B. releases nutrients needed by plants for long time
- C. improve retention of water in the soil
- D. provide specific nutrients

18. The following materials can be used to make rollers **except**:-

- A. pencils
- B. bottle tops
- C. maize cobs
- D. round sticks

19. A farmer practising stall feeding is likely to feed animals on:-

- A. fodder crops and concentrates
- B. pasture only
- C. fodder and pasture
- D. pasture and concentrates

20. Which one of the following components of environment occupies the largest part of the earth's surface?

- A. Water
- B. Air
- C. Soil
- D. Plants

21. Which one of the following is **not** an example of rotational grazing?

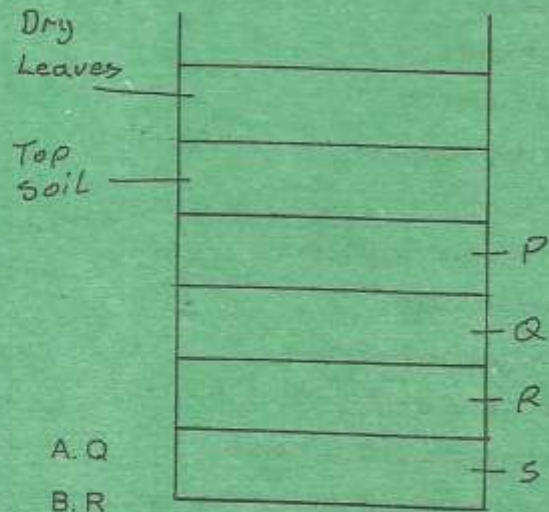
- A. Paddocking
- B. Strip
- C. Herding
- D. Tethering

22. Which one of the following is a social effect of drug abuse?

- A. Fits
- B. Withdrawal
- C. Truancy
- D. Addiction

23. In which one of the following groups of activities is friction not required?
- Swimming and skating
 - Erasing and writing
 - Walking and riding
 - Flying and swimming
24. One of the following is not important to consider when mixing medicine. Which one is it?
- The dose
 - How to store the medicine
 - Duration to complete dose
 - Date of manufacture
25. The first step in obtaining salt from a mixture of salt solution and pieces of aluminum wire is
- using magnets
 - evaporating to dryness
 - filtering
 - winnowing
26. The percentage of component of air in the atmosphere used by green plants to make food is:-
- 21%
 - 0.03%
 - 78%
 - 0.97%
27. Which one of the following components of blood is attacked by human immunodeficiency virus?
- White blood cells
 - Plasma
 - Red blood cells
 - Platelets

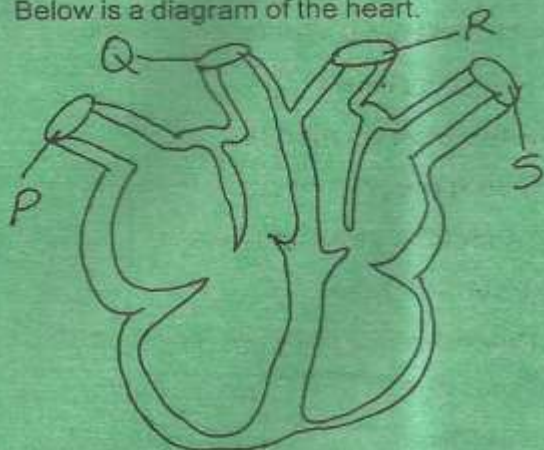
28. Below is a diagram of a compost manure heap. Which letter represents ash?



- Q
- R
- P
- S

29. A person in the incubation period of HIV would show
- signs and symptoms but test negative
 - no signs, no symptoms and test negative
 - signs, symptoms and test positive
 - no signs, no symptoms but test positive
30. Which one of the following pairs of infections consists **only** of those that are sexually transmitted?
- Gonorrhoea and bilhazia
 - Syphilis and chancroid
 - Gonorrhoea and tuberculosis
 - HIV and measles
31. Which one of the following shows 4th and 7th planet from the sun?
- Mars and Uranus
 - Venus and Neptune
 - Jupiter and Saturn
 - Jupiter and Uranus

32. Below is a diagram of the heart.



In which pair of blood vessels is blood under lowest pressure?

- A. R, S B. P, Q
C. P, S D. Q, R

33. Human beings have _____ sets of teeth.

- A. 1 B. 2
C. 20 D. 32

34. Which one of the following is adaptation of plants in wet areas?

- A. Thick barks
B. Fewer leaves
C. Fleshy leaves
D. Broad leaves

35. A child suffering from kwashiorkor should be given diet rich in

- A. protein
B. carbohydrates
C. vitamins
D. fats

36. The ability to do work is

- A. force
B. energy
C. motion
D. friction

37. Which process of heat transfer takes place in liquids and gases?

- A. Conduction
B. Radiation
C. Convection
D. Expansion

38. Which one of the following example of levers has the position of effort between the position of load and fulcrum when in use?

- A. Crowbar
B. Wheelbarrow
C. Hammer
D. Spade

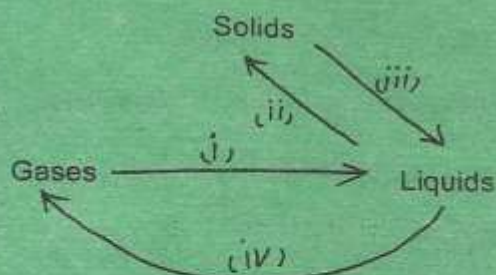
39. Substances that have definite mass and volume are

- A. solids only
B. solid and liquids
C. liquids only
D. liquids and gases

40. The following products can be obtained from goats only **except** :-

- A. wool B. mohair
C. dairy D. mutton

41. Which of the following processes requires increase in temperature?



- A. iii, iv B. i, ii
C. ii, iv D. i, iii

42. Which one of the following factors will **not** affect sinking and floating of materials in water ?
- Mass
 - Materials
 - Shape
 - Size
43. A pupil used water that had been used in rinsing clothes to mop the floor. Which method of water conservation did the pupil practice?
- Using water sparingly
 - Recycling water
 - Re - using water
 - Harvesting water
44. Which one of the following is a way of maintaining simple tools?
- Cleaning before use
 - Storing in safe place
 - Oiling
 - Using tools for several purposes
45. The type of soil erosion which takes place in steeply sloping area is
- gully erosion
 - sheet erosion
 - rill erosion
 - splash erosion
46. The following are stages followed when modeling the planets.
- Draw circle on manila
 - Mount the planets on soft board
 - Model the sun and planets
 - Put name tags
 - Paste manilla paper on soft board
- Which of the following is correct order?
- iii, v, i, ii, iv
 - iii, ii, v, iv, i
 - v, iii, vi, ii, i
 - v, i, ii, ii, iv
47. A pupil was blind folded and asked to listen as a whistle was blown from different positions. Which aspects of sound was being investigated?
- Direction of sound
 - Sound pollution
 - Special sound
 - How sound travels
48. Sweat glands in the skin of human body are located in the:-
- | | |
|--------------|----------------|
| A. oil gland | B. dermis |
| C. epidermis | D. sweat pores |
49. The following are uses of wind **except**:-
- windmill
 - sailing canoes
 - blowing soil away
 - winning
50. Which of the following liquids will mix?
- Kerosene and water
 - Milk and cooking oil
 - Kerosene and milk
 - Cooking oil and kerosene