

BUNGOMA COUNTY PRE - MOCK EXAMS
STANDARD 8 - YEAR 2019
SCIENCE

TIME: 1 HR. 40 MIN.

READ THESE INSTRUCTIONS CAREFULLY

1. You have been given this question paper and a separate answer sheet. The question paper contains 50 questions.
2. Do any necessary rough work in this paper.
3. When you have chosen your answer, mark it on the **ANSWER SHEET**, not in this question paper.

HOW TO USE THE ANSWER SHEET

4. Use an ordinary pencil only.
5. Make sure that you have written on the answer sheet.

YOUR INDEX NUMBER

YOUR NAME

NAME OF YOUR SCHOOL

6. By drawing a dark line inside the correct numbered boxes mark your full Index Number (i.e. School Code Number and the three-figure Candidate's Number) in the grid near the top of the answer sheet.
7. Do not make any marks outside the boxes.
8. Keep the sheet as clean as possible and do not fold it.
9. For each of the questions 1 - 50 four answers are given. The answers are lettered A, B, C, D. In each case only ONE of the four answers is correct. Choose the correct answer.
10. On the answer sheet the correct answer is to be shown by drawing a dark line inside the box in which the letter you have chosen is written.

Example:-

In the Question Paper:

36. The following are ways of maintaining strong teeth except _____
- A. eating lots of cakes, sweets and biscuits
 - B. eating sugarcane, carrots and coconut
 - C. eating eggs, drinking milk
 - D. visiting a dentist

The correct answer is (A) (Eating lots of cakes, sweets and biscuits)

On the answer sheet:-

12 [A] [B] [C] [D] 20 [A] [B] [C] [D] 36 [A] [B] [C] [D] 41 [A] [B] [C] [D] 46 [A] [B] [C] [D]

In the Third set, the box with the letter A printed in it is marked.

11. Your dark line **MUST** be within the box.
12. For each question **ONLY ONE** box is to be marked in each set of four boxes.

This Question Paper consists of 50 Printed Questions.

TURN OVER

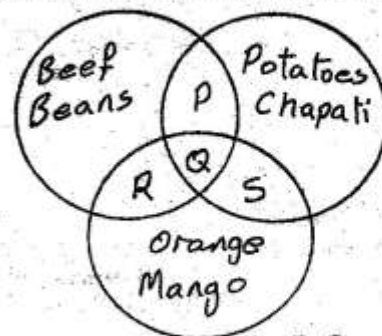
- The process by which mineral salts are removed from water is called
 - Boiling
 - Softening
 - Treating
 - Filtering
- The following are adaptive features of a certain plant.
 - Few, curled and folded leaves
 - Thick waxy cuticle
 - Silvery and shiny hairs
 The above adaptive features are for plants that have:-
 - Broad leaves
 - Numerous stomatas
 - Succulent stem
 - Modified roots for breathing
- Soil becomes water logged due to:-
 - Its colour
 - The size of soil particles
 - The amount of air present
 - The absence of small animals
- To investigate the conditions necessary for seed germination, pupils set up an experiment in four open bottles as follows.

Bottle J - Boiled water + Bean seeds
 Bottle K - Bean seeds + Dry cotton wool
 Bottle I - Oil + Boiled water + Bean seeds
 Bottle M - Bean seeds + Wet cotton wool

 Which pair of the set up will enable the pupils make the conclusion that oxygen is necessary for seed germination?
 - M + K
 - L + J
 - K + J
 - M + L
- Which one of the following is the reason why the top of the collecting jar is about 30 cm above the ground level as the rain gauge is dug into the ground?
 - To reduce the rate of evaporation of the rain water collected
 - To stop rain water from getting into the rain gauge
 - To make the rain gauge firm
 - To prevent water on the ground from splashing into the funnel

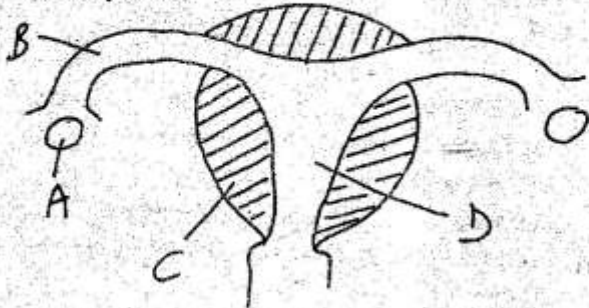
- Which of the following groups of food contains proteins ONLY?
 - Sugarcane, honey, ripe banana and beans
 - Coconut oil, liver oil, termites and sunflower
 - Milk, mutton, eggs and peas
 - Groundnuts, green maize, kales and eggs
- Which one of the following pairs of liquids is immiscible?
 - Cooking oil and spirit
 - Kerosene and cooking oil
 - Spirit and water
 - Water and milk
- In which of the following are materials CORRECTLY grouped as magnetic and non-magnetic.

Magnetic	Non - Magnetic
A. Steel	Aluminium
B. Zinc	Steel
C. Aluminium	Copper
D. Copper	Zinc
- Which one of the following DOES NOT work on the principle of an inclined plane?
 - Staircase
 - Screw
 - Winch
 - Axe
- The diagram below represents different types of food. Which letter represents a balance diet to be served in a wedding ceremony?



- P
- O
- R
- S

11. The diagram below shows where different processes of human reproduction takes place. Which one shows where ovulation takes place?



- A. D
C. B
B. C
D. A
12. Which one of the following should be result of reduction of Red Blood Cells in the body?
A. Amount of oxygen in the body decreases
B. Carbon dioxide accumulate in the body
C. The body lacks immunity
D. Amount of oxygen increases in the body
13. The following are effects of HIV/AIDS infection on a nation **EXCEPT**
A. Loss of employment
B. Overcrowding in hospitals
C. Loss of productive members of the society
D. Population increase
14. Kiprotich has two dairy cows. The **BEST** grazing method to adopt is
A. Stall
B. Strip
C. Tethering
D. Paddocking
15. Insectivorous plants produce juice to digest insects. What do the plants make after digesting the insects?
A. Vitamins
B. Proteins
C. Nitrogen
D. Minerals
16. Which one of the following fertilizers is the **ODD** one out?
A. Blood meal
B. Calcium Ammonium Nitrate
C. Single super phosphate
D. Sulphate of Ammonia

17. Which weather instrument works under the principle of matter occupy space?

- A. Wind vane
B. Wind sock
C. Anemometer
D. Hygrometer

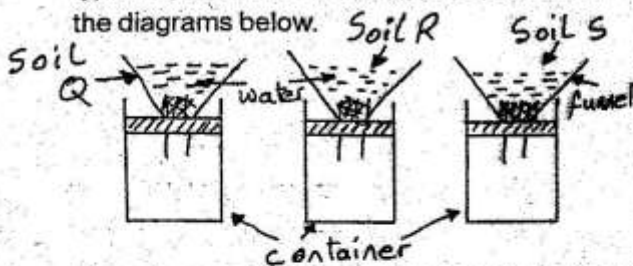
18. Below is a set-up that was used by pupils to investigate one of the uses of air.



Which one of the following statements about the set-up is **IN CORRECT**?

- A. Pupils observe that part of air is used in burning
B. Water level was seen rising in the glass after the candle went off
C. The candle went off after some time
D. Pupils concluded that oxygen supports burning
19. Which one of the following statements about carnassial teeth in carnivores is **NOT TRUE**?
A. They act like scissors
B. Present on both the lower and upper jaws
C. Help to slice flesh and crack bones
D. Help to grip and crush bones into portions that can be safely swallowed
20. Which one of the following is **NOT** a use of water for recreation?
A. Swimming
B. Boat rowing
C. Surfing
D. Fountain

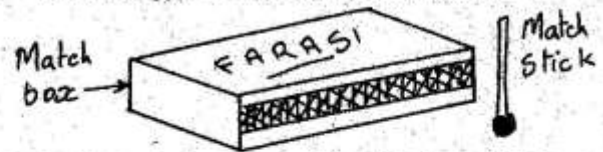
21. Pupils investigated water retention in different types of soil. Their results were as shown in the diagrams below.



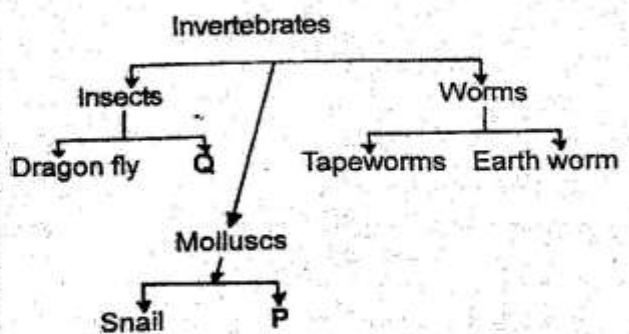
From the results, the soil samples Q, R and S are most **LIKELY** to be:

- | S | P | Q |
|---------|------|------|
| A. Sand | clay | loam |
| B. Clay | loam | sand |
| C. Loam | clay | sand |
| D. Loam | sand | clay |
22. Which one of the following methods of food preservation is both traditional and modern?
 A. Using honey
 B. Using low temperatures
 C. Salting
 D. Smoking
23. Which one of the following is the reason why tall buildings are fitted with thick copper rod that is buried in the ground?
 A. To provide them with electric current
 B. To protect them against lightning
 C. To make them good conductors of electricity
 D. To provide them with static electricity
24. Which medium **DOES NOT** conduct heat at its best?
 A. Air
 B. Solid
 C. Liquid
 D. Water vapour
25. Which of the following vaccine is given to a child orally and on the left lower arm?
 A. BCG Polio
 B. Polio, DPT
 C. Vitamin A, Anti measles
 D. Polio, BCG
26. As Mercy was weeding she noticed a plant which had several green fruits, purple flowers and thorny stem. The plant was likely to be
 A. Black jack
 B. Wandering jew
 C. Double thorn
 D. Sodom apple
27. The juice that completes digestion in human beings are:-
 A. Bile
 B. Pancreatic juices
 C. Gastric juices
 D. Intestinal juices

28. The diagram below represent a match box and a burning match stick.
 The energy transformation involved is:



- | | | |
|-------------|------------|----------|
| A. Chemical | Electrical | Light |
| B. Static | Kinetic | Chemical |
| C. Chemical | Heat | Light |
| D. Heat | Kinetic | Chemical |
29. Which one of the following is **NOT** an effect of air pollution?
 A. Destruction of rubber materials by smog
 B. Blockage of stomata by dust and soot particles
 C. Weathering of rocks by acid rain
 D. Corrosion of corrugated iron sheets and marble by acid rain
30. Which one of the following statements about a beam balance is **NOT TRUE**?
 A. It is used to measure weights of different objects
 B. When constructing it, the pivot must be at the balancing point
 C. Two identical tins are necessary materials for its construction
 D. When constructing it, the arm must balance before fixing the support
31. Class 5 classified animals as follows



The letters Q and P represents

- | Q | P |
|-------------|-----------|
| A. Spider | squid |
| B. Ladybird | oyster |
| C. Mite | lobster |
| D. Moth | millipede |

32. A man visited the hospital suffering from an STI infection and had the following signs and symptoms.

(i) **Stiffness of the neck**

(ii) **Painful sores around and on the genitals**

(iii) **Pain and itching when urinating**

The man was **LIKELY** to be suffering from:-

- A. Chancroid B. Genital herpes
C. Syphilis D. Gonorrhoea

33. Tapeworms in livestock is found in the

- A. Large intestine B. Stomach
C. Small intestine D. Lungs

34. The splitting of white light produces a band of colours known as

- A. Dispersion B. Beam
C. Spectrum D. Rays

35. Which one of the following groups of plant nutrients consist of only macro - nutrients

- A. Zinc, boron, chlorine
B. Manganese, oxygen, nitrogen
C. Phosphorous, copper, molybdenum
D. Nitrogen, magnesium, carbon

36. The following are signs and symptoms of a disease

(i) **Skin rash if the worms are many**

(ii) **Fever after about four weeks**

(iii) **Blood in the urine**

(iv) **Swimmer's itch**

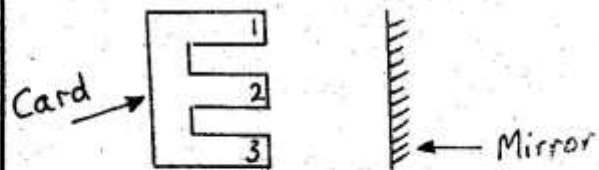
Which one of the following diseases is it likely to be ?

- A. Typhoid B. Dysentery
C. Bilhazia D. Cholera

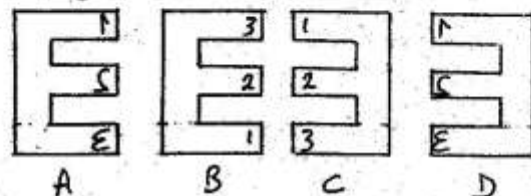
37. The **BEST** method of handling waste polythene paper is through

- A. Reusing B. Burning
C. Recycling D. Burying

38. A card made in the shape of letter **E** and numbers **1, 2** and **3** written on it was placed in front of a mirror as shown in the diagram below.



Which of the following correct represent the image as seen in the mirror?



39. Which one of the following practices will **NOT** result in a person getting an electric shock?

- A. Touching sockets with wet hands
B. Putting pencils in sockets
C. Overloading the sockets
D. Putting iron nails in sockets

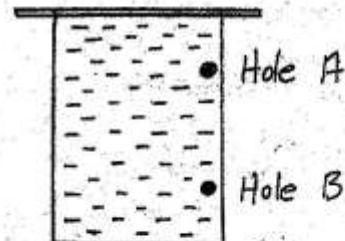
40. Which one of the following pairs consist only of substances that are in the same state of matter?

- A. Oil and water vapour
B. Wax and glue
C. Ice and water
D. Air and water vapour

41. The most **LIKELY** pollutant that causes damage to corrugated iron sheets on buildings are gases from

- A. Aerosal spray B. Burning objects
C. Industries D. Vehicle exhaust

42. Abel tilted a container with water and closed it tightly. He then made two holes as shown below.



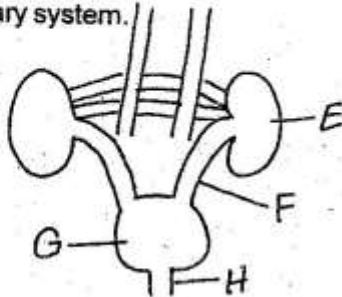
What did he observe?

- A. Water came out through hole B only
B. Hole B threw the longest jet
C. Hole A threw the longest jet
D. Both holes did not allow water out

43. Which one of the following parasites **DOES NOT** attack poultry?

- A. Tick B. Mite
C. Flea D. Louse

44. The diagram below represents the parts of the urinary system.



The parts represented by E, F, G and H are

	H	G	F	E
A.	Bladder	ureter	left kidney	urethra
B.	Ureter	right kidney	urethra	bladder
C.	Right kidney	urethra	bladder	ureter
D.	Urethra	bladder	ureter	left kidney

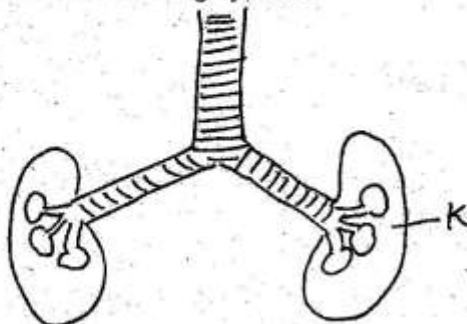
45. The diagram below represents the solar system.



Which of the following statements about planets represented by X, Y and Z is **TRUE**?

- A. Z takes longer time to go round the sun than Y
B. X is the smallest planet
C. Y is nearer to the sun than X
D. All reflect light from the sun except Z

46. The diagram below represents the parts of the human breathing system.



Which of the following statements about the part marked K is correct?

- A. It is the passage way through which the air passes from nose to the lungs
B. It is where exchange of gases take place
C. It is where air is cleaned
D. It is a sheet of muscle that separates the chest from the abdomen

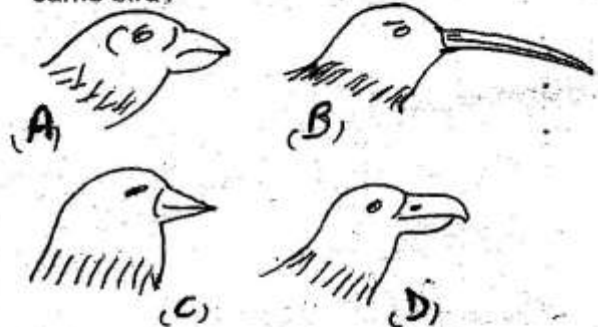
47. Which of the following is a reason why compost heap should be turned occasionally?

- A. To provide nutrients to the bacteria
B. To supply additional nutrients
C. To introduce additional decomposers
D. To allow circulation of air

48. The diagram below represents a foot of a certain bird.



Which of the following beaks belongs to the same bird?



49. The reason why improved jikos have clay lining is to

- A. Reduce the amount of heat loss
B. Reduce space for charcoal intake
C. Make the jiko last longer
D. Reduce the speed of burning charcoal

50. The **BEST** maintenance practices for a tool which experiences a lot of friction is to

- A. Sharpen regularly
B. Oil regularly
C. Clean properly
D. Store properly