

BARINGO PRE-MOCK EXAMS

STANDARD EIGHT - YEAR 2019

SCIENCE

READ THESE INSTRUCTIONS CAREFULLY

TIME: 1 HR. 40 MINS.

1. You have been given this question paper and a separate answer sheet. The question paper contains 50 questions.
2. Do any necessary rough work in this paper.
3. When you have chosen your answer, mark it on the **ANSWER SHEET**, not in this question paper.

HOW TO USE THE ANSWER SHEET

4. Use an ordinary pencil only.
5. Make sure that you have written on the answer sheet.

YOUR INDEX NUMBER

YOUR NAME

NAME OF YOUR SCHOOL

6. By drawing a dark line inside the correct numbered boxes mark your full Index Number (i.e. School Code Number and the three-figure Candidate's Number) in the grid near the top of the answer sheet.
7. Do not make any marks outside the boxes.
8. Keep the sheet as clean as possible and do not fold it.
9. For each of the questions 1 - 50 four answers are given. The answers are lettered A, B, C, D. In each case only **ONE** of the four answers is correct. Choose the correct answer.
10. On the answer sheet the correct answer is to be shown by drawing a dark line inside the box in which the letter you have chosen is written.

Example:-

In the Question Paper:

36. The following are ways of maintaining strong teeth except _____
- A. eating lots of cakes, sweets and biscuits
 - B. eating sugarcane, carrots and coconut
 - C. eating eggs, drinking milk
 - D. visiting a dentist

The correct answer is (A) (Eating lots of cakes, sweets and biscuits)

On the answer sheet:-

12 [A] [B] [C] [D] 20 [A] [B] [C] [D] 36 [A] [B] [C] [D] 41 [A] [B] [C] [D] 46 [A] [B] [C] [D]

In the Third set, the box with the letter A printed in it is marked.

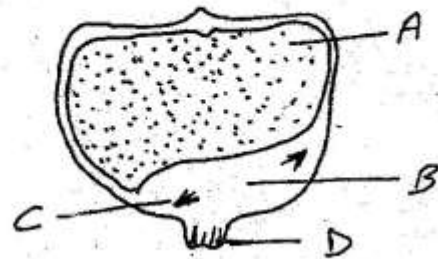
11. Your dark line **MUST** be within the box.
12. For each question **ONLY ONE** box is to be marked in each set of four boxes.

This Question Paper consists of 50 Printed Questions.

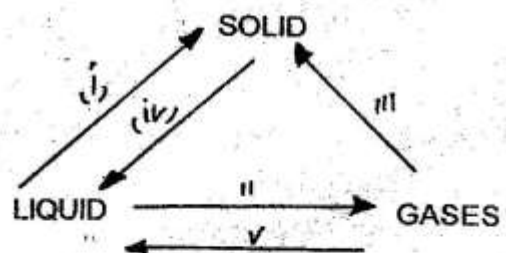
TURN OVER

- The word **SCIENCE** appears to change when placed in front of a mirror due to?
 - Refraction
 - Reflection
 - Dispersion
 - Absorption
- Calcium and phosphorous are useful in the human body. Where are they absorbed?
 - Duodenum
 - Stomach
 - Large intestine
 - Small intestine
- Which of the following small animal groups can be classified with crabs?
 - Spider, Scorpion, Tick
 - Ant, Beetle, Moth
 - Prawn, Lobster
 - Scorpion, Shrimp, Millipedes
- The following are pairs of plants. Which pair is composed of Non-flowering green plants only?
 - Algae and Mosses
 - Mushroom and toadstool
 - Fern and Mushroom
 - Mosses and Toadstool
- Which of the following statements about a shark, a tortoise and a newt is **TRUE**?
 - Their body temperature changes with surrounding
 - Their bodies are covered with the surrounding
 - They breath by means of lungs
 - They lay fertilized eggs
- Which one of the following describes self pollination?
 - The transfer of pollen grains from the anther to the stigma of plant within
 - The transfer of pollen grains from the anther to the stigma of different flowers or plant of the same kind.
 - The transfer of pollen grains from the anther to the stigma of different flower or plants of different kind
 - The transfer of pollen grains from the anther to the stigma of another flower or the same plant.

- The diagram below shows a maize grain. Which of the following is **TRUE**?



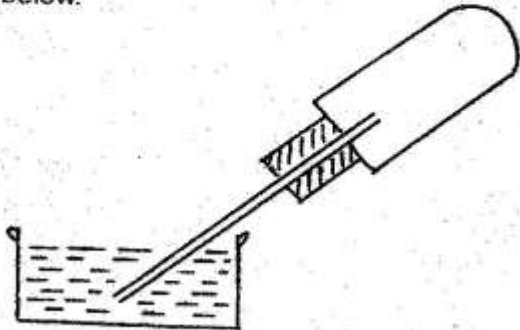
- Part (A) store food in in a dicot seed
 - Part (B) store food in the maize grain
 - Part (C) is the first to emerge during germination
 - Part (D) is the style scar.
- Which of the following excretory waste is excreted by the most excretory organs?
 - Water
 - Sweat.
 - Urea
 - Salt
 - Which of the following is percentage of the gas whose amount reduces by 5% in the lungs during breathing?
 - 21%
 - 78%
 - 0.03%
 - 0.97%
 - The process i,ii,iii,iv and v in the chart below bring about changes in the state of matter.



Which process take place at the same temperature?

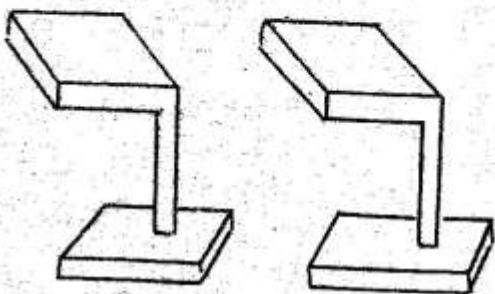
- ii,iv
- i,iv
- i,iii
- iii,v

11. Ruth held a flask with a glass tube fitted into it through a rubber stopper and placed the glass tube in a container of water as shown below.



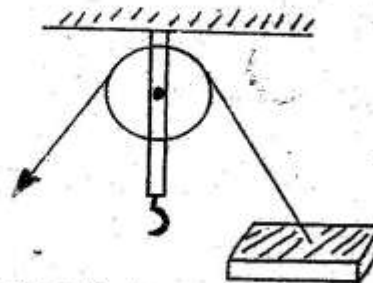
What was she investigating?

- A. Water level rising due to bubbles
 B. Air occupies space
 C. Gases increases in volume on heating
 D. Convection of air in water
12. A pupil made the following using materials of same size. He then dipped them in a basin full of water. Which of the following is TRUE?



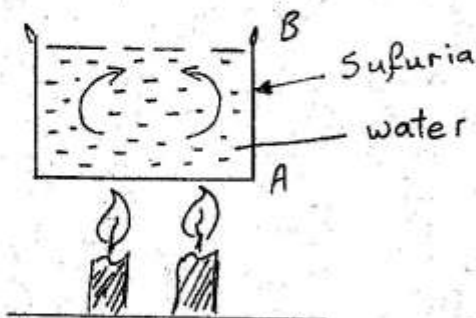
- A. The wooden piece displaced water equal to its volume
 B. The wooden and stone materials differed in their volumes
 C. Stone sunk while the wood floated due to difference in their shapes
 D. The stone piece displaced water equal to its volume
3. Which of the following does **NOT** occur as a result of friction?
- A. Heat is produced
 B. Work is done
 C. Motion is reduced
 D. Energy is transformed

14. Which one of the following statements about the simple machine shown is TRUE?
 The load



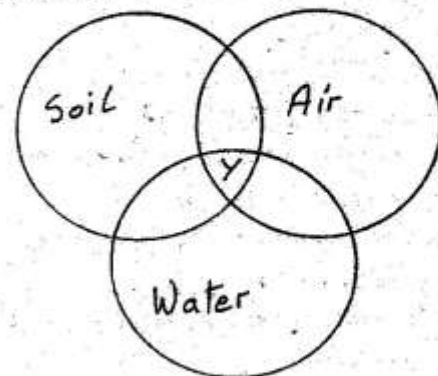
- A. And the effort move the same distance
 B. Is half the effort needed
 C. And the effort move in the same direction
 D. Is pulled by the effort towards gravity
15. When performing experiments to show water retention capacity which one of the following does **NOT** need to be the same?
- A. The size of collecting, funnel
 B. The size of measuring jars
 C. The amount of water
 D. The size of the collecting container
16. Which one of the following consists of only materials that are magnetic?
- A. A shilling coin, iron nail
 B. Aluminium foil, scissors
 C. Iron nail, staple pins.
 D. Sewing needle, a shilling coin
17. The following are breathing organs. Which one is correctly matched with what happens during breathing out?
- A. Ribs - moves outwards
 B. Chest cavity - decrease in volume
 C. Lungs - gets deflated
 D. Diaphragm - moves downwards
18. Which one of the following conserves soil by preventing soil erosion and maintaining soil fertility?
- A. Contour farming
 B. Mulching
 C. Crop rotation
 D. Cover crops

19. Which one of the following statement is **TRUE** about a person intending to use a ladder in climbing a 5m wall?
- By increasing the slope, he will use less effort
 - There is no difference in work he does by using two ladder of different lengths
 - By decreasing the slope he will need less effort
 - The longer the ladder the longer the distance covered and the more the force used
20. Why do doctors advise patients to buy medicines from a pharmacy as opposed to ordinary shops?
- Medicine from pharmacy have expiry date
 - Medicine from shops may not be well stored as those in the pharmacy
 - The pharmacist will write the dosage to the patient
 - Medicine from shop may not state the method of container disposal
21. Which of the following tuber crops is the odd one out?
- Yam
 - Carrot
 - Cassava
 - Sweet potato
22. The diagram below shows a demonstration of heat transfer. By which process does heat travel from A to B



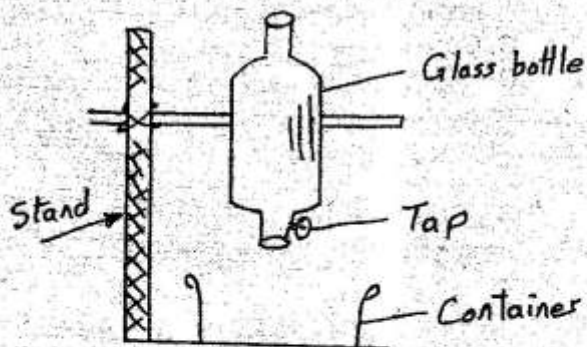
- Radiation
- Convection
- Convictional currents
- Conduction

23. Which one of the following sets of planets consists of the third and sixth largest planet respectively?
- Jupiter and Mercury
 - Neptune and Venus
 - Mars and Uranus
 - Earth and saturn
24. Which of the following changes light energy to chemical?
- Solar panel
 - The leaf
 - Electrical bulb
 - A dry cell
25. Which one of the following consist of only characteristics of wind pollinated flowers?
- Stiff filaments and anthers obstruct visiting insects
 - Large petals protecting stamens and carpels
 - Small dry and light pollen
 - Sticky and unexposed stigma
26. Which one of the following is not an artificial source of light?
- Candle
 - Electricity
 - Comet
 - Lamp
27. The chart below shows three main components of environment. Which one of the following pollutants represent Y?



- Acid rain
- Factory waste
- Sewage
- Fertilizers

28. The diagram below shows an apparatus used to separate liquid mixtures.



Which one of the following mixture can one separate by using the above apparatus?

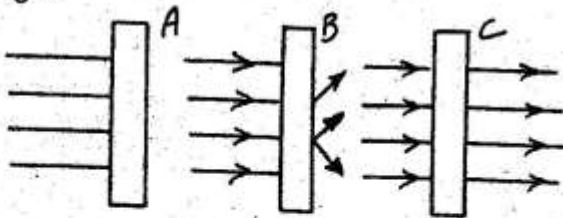
- A. Water and petrol
 B. Oil and kerosene
 C. Diesel and oil
 D. Water and milk
29. The gas whose percentage is 78% is used in:-
 A. Photosynthesis
 B. Making proteins in legumes
 C. Electric bulb to prevent over heating
 D. Germination of seeds
30. To show care and support to HIVAIDS patients we should do all the following **EXCEPT**
 A. Show them sympathy
 B. Give them food
 C. Provide care and love
 D. Give medical assistance
31. Pastures or legumes crop harvested, farmented and preserved for future use when there is scarcity of animal feed are known as
 A. Conserved feeds B. Concentrates
 C. Silage D. Hay
32. Which one of the following practices does **NOT** pollute the environment?
 A. Exhaust gas from aeroplanes
 B. Applying some oil in a lake to kill mosquito larvae
 C. Burning of domestic waste
 D. Gases from decaying animal

33. A child had the following signs on her body
 (i) **Very thin and underweight**
 (ii) **Loose skin on the body**
 (iii) **No flesh on the bones**
 (iv) **Very dull and cant play about**
 (v) **Sunkens eyes with an old person's face**

Which of the following foods would you advise the father to use?

- A. Eggs, meat, cassava
 B. Milk, eggs, paw paws
 C. A lot of eggs, little of paw paws, a lot of vegetables
 D. Vegetables, some eggs milk, a lot of carbohydrates
34. The following are disadvantages of organic fertilizers. Which one is **NOT**?
 A. They are easily leached
 B. They contain low plant nutrients
 C. They may contain crop pests
 D. Take long to decompose
35. Which of the following foods in diet would help reduce constipation?
 A. Fruit salad B. A glass of water
 C. Meat balls D. Milk
36. Typhoid is one of the water- borne diseases. Which one of the following signs and symptoms does **NOT** describe Typhoid?
 A. Diarrhoea and vomiting may be minimal or absent
 B. Skin rash
 C. Swimmers itch
 D. Aches in the muscles and joints
37. The following are sources of electricity :-
 (i) **geothermal**
 (ii) **solar panel**
 (iii) **diesel generators**
 (iv) **wind driven turbines**
 The two sources of electricity that **DO NOT** polute the environment are?
 A. (i) and (ii) B. (ii) and (iv)
 C. (i) and (iii) D. (iii) and (iv)

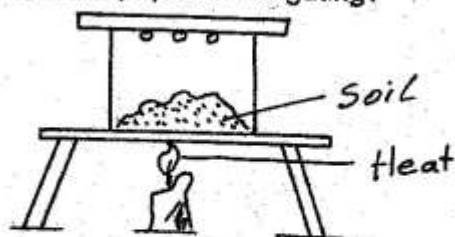
38. Which one of the following descriptions of beaks is **WRONGLY** matched?
- hawk- short strong and curved
 - chicken-short straight and conical
 - duck-long broad flat serrated edges
 - sun bird- short strong and slightly curved.
39. The following are some characteristics of a group of animals.
- Has compound eyes
 - Breathes by means of spiracles
 - Has three body parts
- Which one of the following animal can fit the group?
- Tick
 - Mite
 - Spider
 - Weevil
40. Which one of the following factors will one **NOT** consider when making a rain gauge?
- Having the scale in millimetre
 - Having the collecting jar narrow
 - Placing the instrument 15cm deep in the soil
 - Having the funnel with a diameter of 13cm
41. Which group of levers mentioned below has a greater effort distance than the load distance?
- Wheelbarrow, nutcracker and bottle opener
 - Spade, tongs and human arm
 - Seesaw, beam balance and claw hammer
 - Lid opener, nutcracker and bottle opener
42. The diagram below represents a set up that is used to investigate a certain property of light.



Which one of the following statements is **TRUE** about the set up?

- Its shows that light travels in a straight line
- Object A can be a frosted glass
- You can see through object B
- Object C can be clear water

43. The following are methods of conserving energy. Which one does **NOT** show conservation under using energy sparingly?
- Walking for short distances
 - Improving road network
 - Car pooling
 - Using solar energy
44. The splitting of white light into constituent colours is known as
- Refraction
 - Reflection
 - Deffraction
 - Diffusion
45. The **MAIN** reason for maintaining simple tools is
- To avoid accidents when using them
 - To prevent them from rusting
 - To make them last longer
 - To reduce loses which occur regularly.
46. The following are economic effects of drug abuse Which one is **NOT**?
- Lack of skilled man power
 - Loss of employment
 - Misuse of family resources
 - Crime rate increase in the society
47. Which one of the following clouds cause a halo?
- Cummulus
 - Currus
 - Stratus
 - Nimbus
48. Why should a lactating mother drink a lot of milk?
- To get enough minerals for herself and the baby
 - To produce enough minerals for herself and the baby
 - To prevent the baby from the rickets
 - For strong teeth formation of the baby
49. Std 4 pupils carried out the experiment shown below. Which component of soil were the pupils investigating?



- Air
 - Moisture
 - Humus
 - Animal
50. Which one of the following is **NOT** a living component of the environment?
- Rain
 - Weeds
 - Animals
 - Plants