

**BARINGO PRE-MOCK EXAMS**  
**STANDARD EIGHT - YEAR 2019**  
**MATHEMATICS**

**TIME: 2 HOURS**

1. You have been given this question paper and a separate answer sheet. The question paper contains 50 questions.
2. Do any necessary rough work in this paper.
3. When you have chosen your answer, mark it on the **ANSWER SHEET**, not in this question paper.

**HOW TO USE THE ANSWER SHEET**

4. Use an ordinary pencil only.
5. Make sure that you have written on the answer sheet.

**YOUR INDEX NUMBER**

**YOUR NAME**

**NAME OF YOUR SCHOOL**

6. By drawing a **dark line** inside the correct numbered boxes mark your full Index Number (i.e. School Code Number and the three- figure Candidate's Number) in the grid near the top of the answer sheet.
7. Do not make any marks outside the boxes.
8. Keep the sheet as clean as possible and do not fold it.
9. For each of the questions 1 - 50 four answers are given. The answers are lettered A, B, C, D. In each case only **ONE** of the four answers is correct. Choose the correct answer.
10. On the answer sheet the correct answer is to be shown by drawing a dark line inside the box in which the letter you have chosen is written.

**Example:-**

**In the Question Paper:**

23. Wanjiku had a piece of wood measuring 32.4m. She wanted to cut it into equal lengths measuring 0.4m. How many pieces did she get?
- A. 8.1  
B. 81  
C. 32.6  
D. 28.4

The correct answer is **(B) (81)**

**On the answer sheet:**

8 [A] [B] [C] [D] 12 [A] [B] [C] [D] 17 [A] [B] [C] [D] 18 [A] [B] [C] [D] 23 [A] [B] [C] [D]

In the **Fifth** set, the box with the letter **B** printed in it is marked.

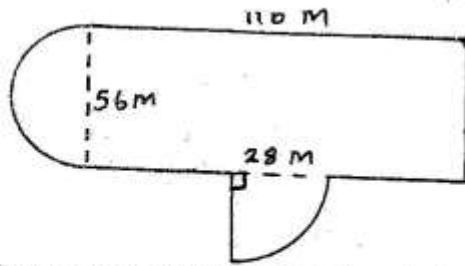
11. Your dark line **MUST** be within the box.
12. For each question **ONLY ONE** box is to be marked in each set of four boxes.

**This Question Paper consists of 50 Printed Questions.**

**TURN OVER**

1. What is sixteen million and thirty six written in symbols?  
A. 600036                      B. 16000036  
C. 16000                         D. 1600360
2. Three candidates contested for a seat. Candidate A got 6045 more votes than candidate B who got 4915 votes less than candidate C. If candidate C got 8515 votes, how many votes were cast?  
A. 19472                         B. 25517  
C. 21751                         D. 32711
3. What is the next number in the series 211, 174, 143, 114, \_\_\_\_\_?  
A. 91                                B. 93  
C. 99                                D. 95
4. After decreasing a number by 10%. I got 360. What was the number?  
A. 394                               B. 400  
C. 324                               D. 350
5. Warigia bought the following items:-  
2  $\frac{3}{4}$  kg meat @ Shs. 120.00  
5kg tomatoes for Shs. 125.00  
2 -2kg tin of cooking fat @ Shs. 180.00  
3 -2kg packets of wheat flour @ Shs. 115.00  
What balance did she get from two one thousand shillings note?  
A. Shs. 840                        B. Shs.340  
C. Shs. 45                         D. Shs. 430
6. What is the value of  $5^2 (6^2 - 4^2)$ ?  
A. 100                               B. 40  
C. 500                               D. 50
7. A shopkeeper packed 90 kg sugar into 750 g packets. How many packets did she use to pack the sugar?  
A. 120                                B.  $8\frac{3}{10}$   
C. 360                                D. 3600
8. What is the value of  $\frac{0.81 \times 9.8}{0.9 \times 4.9}$ ?  
A. 180                                B. 1.8  
C. 8.82                              D. 18
9. A shopkeeper sold an item at Shs. 1,080.00 making a 10% loss. What was his buying price?  
A. Shs. 1,188.00                B. Shs. 972.00  
C. Shs. 1,170.00                D. Shs. 1,200.00
10. A tank has a diameter of 14m and a height of 7 m. How many litres of water does it hold when full?  
A. 1078000                        B. 10780  
C. 1078                               D. 107800
11. A vehicle covered a distance of 180 km in  $2\frac{1}{2}$  hours. What is its average speed in m/s?  
A. 25                                 B. 15  
C. 20                                 D. 30
12. Salome borrowed Shs. 150,000.00 from a bank that charged compound interest at the rate of  $7\frac{1}{2}\%$  p.a. for 24 months. How much did she pay back at the end of this period?  
A. Shs. 172,500.00                B. 173,343.75  
C. Shs. 161,250.00                D. 160,500.00
13. The two parallel sides of a trapezium are 24m and 16 m. The distance between the two lines is 15m. What is the area in hectares?  
A. 0.03                                B. 30  
C. 300                                 D. 0.3
14. Calculate the surface area of a closed cylinder with a diameter of 21cm and a height of 20cm.  
A. 27720                              B.  $1666\frac{1}{2}$   
C. 6930                                D. 2013

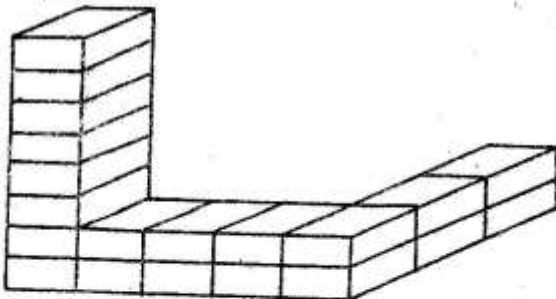
15.



The diagram above represents a plot of land which was fenced using 5 strands of wire. How long was the wire used?

- A. 2040m                      B. 1630m  
C. 1930m                      D. 2470m

16.



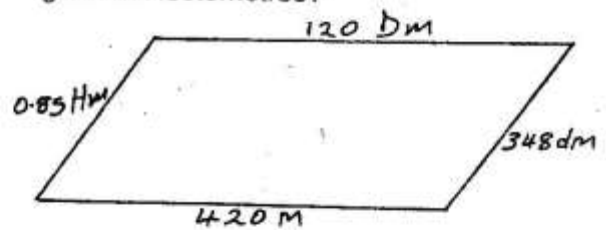
How many cubes are needed to complete the above stack?

- A. 20                              B. 98  
C. 100                             D. 120
17. Sixteen men were to dig a piece of land in 12 days. Four of the men failed to attend to the job. How many more days did it take to complete the job?
- A. 8                                 B. 4  
C. 12                                D. 16
18. After having travelled for 8 hours 45 minutes a bus arrived at Kitale at 5.06am. When had it started the journey?
- A. 9.21pm                        B. 8.15pm  
C. 9.15pm                        D. 8.21pm
19. If  $m = r + 2$ ,  $p = 5$  and  $r = 2p - 4$ . What is the value of  $2p^2(m + 3r)$ ?
- A.  $32\frac{1}{3}$                               B. 13  
C.  $43\frac{1}{3}$                               D. 50

20. Three people Gachara, Mutua and Chebet contributed some money. Mutua contributed Shs 807 less than Chebet who contributed Shs. 396 more than Gachara. If Gachara's contribution was  $x$ , what was their total contribution?

- A.  $3x + 15$                       B.  $3x + 311$   
C.  $3x - 15$                       D.  $3x + 707$

21. What is the perimeter of the figure below given in Hectometres?



- A. 17.398                        B. 173.98  
C. 1.78398                      D. 15.048
22. The table below shows crates of sodas sold in a shop in a given week. Use it to answer the questions that follow.

Type of soda	krest	coke	sprite	fanta	stoney
No of crate	20	65	30	40	25

If a Pie Chart was used to show the information, what angle was used to show the number of coke soda sold ( N/ B Each crate holds the same number of bottles)

- A.  $120^\circ$                               B.  $80^\circ$   
C.  $160^\circ$                              D.  $130^\circ$
23. What is the value of  $x$  in the equation?

$$5x + 3 + 9 = x + 11$$

- 4
- A.  $5\frac{3}{4}$                                 B. 3  
C. 5                                    D.  $9\frac{2}{3}$



24. Simplify  $3(4n + 3y) - 6n + 3y$

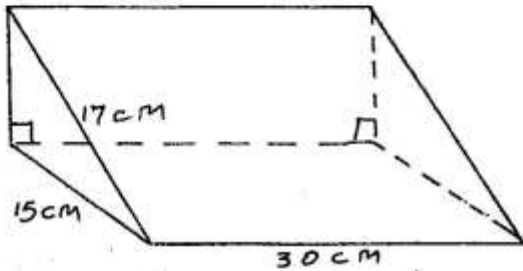
$$3n + 6y$$

A.  $2n + 4y$                       B.  $\frac{1}{2}ny$

$n + 2y$

C. 2                                      D.  $2n + 2y$

25. Calculate the volume of the triangular prism shown below.



A.  $2040\text{cm}^3$                       B.  $1800\text{cm}^3$

C.  $3600\text{cm}^3$                       D.  $3825\text{cm}^3$

26. What is  $3.0972$  rounded off to the nearest hundredths?

A. 3.09                                  B. 3.097

C. 3.10                                  D. 3.1

27. Construct triangle **MNO** in which **MN = 6cm**, **NO = 7cm** and **angle MNO = 110°**. Draw a circle touching the three sides and measure its radius.

A. 1.9cm                                  B. 3.4cm

C. 3.8cm                                  D. 1.7cm

28. What is the sum of the **GCD** and **LCM** of **20, 30, and 50**?

A. 160                                      B. 310

C. 240                                      D. 250

29. The population of a school increased in the ratio **5:2**. If the original population was **490**, by how many pupils did the population increase?

A. 735                                      B. 686

C. 294                                      D. 1225

30. The hire purchase price of a power saw was Shs. 65,000.00. Asha bought it by paying a deposit of Shs. 20,000.00 followed by 15 monthly instalments. How much was each instalment?

A. Shs. 4,200.00                      B. Shs. 4,333.00

C. Shs. 1,333.00                      D. Shs. 3,000.00

31. On a map, the scale **1:5000** was used to represent a length of a piece of land whose drawing length was **2.5m**. What was its actual length in metres?

A. 1250                                      B. 12.5

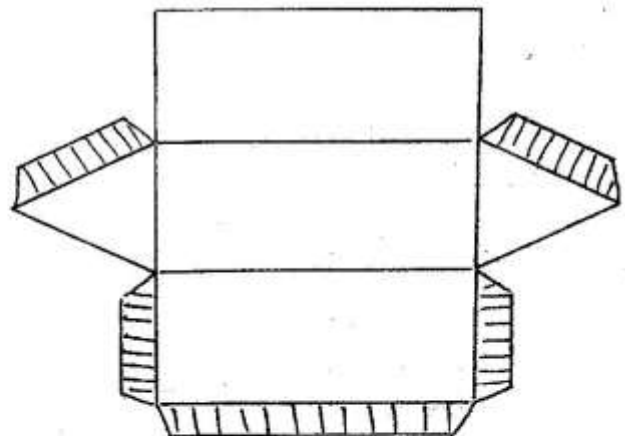
C. 125                                        D. 12500

32. Magachi left her home to visit a sister in Nairobi on 15th February 1996 morning and went back home on the morning of 15th April the same year. How main nights did she spend at her sister's home?

A. 58                                        B. 60

C. 61                                        D. 59

33. What is the total number of faces, vertices and edges in the solid that would be made from the net below?



A. 20                                        B. 18.

C. 19                                        D. 14

34. What is the square root of **9.4864**?

A. 3.69                                      B. 3.64

C. 36.8                                      D. 3.08

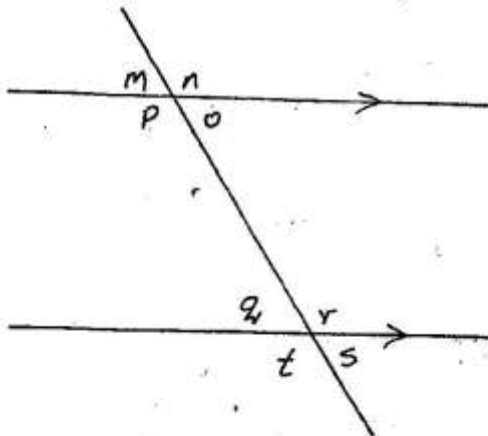
35. Five 3 litre bottle of milk was packed into 2dl bottle. How many bottles were used to pack at the milk?

- A. 750                      B. 7.5  
C. 75                         D. 15

36. A loaded lorry had a mass of 7.7 tonnes. It was loaded with 30 - 90kg bags of maize and 25 - 50 kg bags of cement. What was the mass of the lorn when empty.

- A. 3.85tonnes  
B. 3.75tonnes  
C. 3.7 tonnes  
D. 5tonnes

37. The figure below shows parallel lines and a transversal. Which of the given statement is TRUE of the diagram?

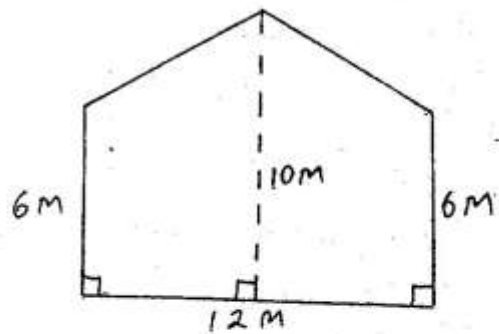


- A. angle o = angle q ( corresponding angles)  
B. angle n + angle r = 180° ( co-interior angles)  
C. angle m = angle t ( corresponding angles)  
D. angle t = angle m = angle n

38. A shopkeeper sold an item at Shs. 190.00 making a 5% loss. How much could he sell it to make a 10% profit?

- A. Shs. 220.00              B. Shs. 205.00  
C. Shs. 200.00              D. Shs. 215.00

39. What is the area of the given figure below?



- A. 120m<sup>2</sup>                      B. 192m<sup>2</sup>  
C. 96m<sup>2</sup>                        D. 72m<sup>2</sup>

40. The following are properties of quadrilaterals

- i) All sides are equal  
ii) Diagonals are equal  
iii) Diagonals are perpendicular bisectors  
iv) Has one pair of parallel lines.  
v) All angles are equal  
vi) Diagonals are not equal.

Which properties are for a rhombus?

- A. i, iii, iv                      B. i, iii, v  
C. i, ii, iii, vi                      D. i, iii, vi

41. Shaffi bought a trouser and was given a 25% discount. The discount was of Shs. 125.00. What was its marked price?

- A. Shs 166.70  
B. Shs 93.75  
C. Shs 937.50  
D. Shs. 500.00

42. The top of a ladder 26 metres long, leans on a vertical wall. The ladder touches the wall at a height of 10m. What is the distance from the bottom of the ladder to the bottom of the wall?

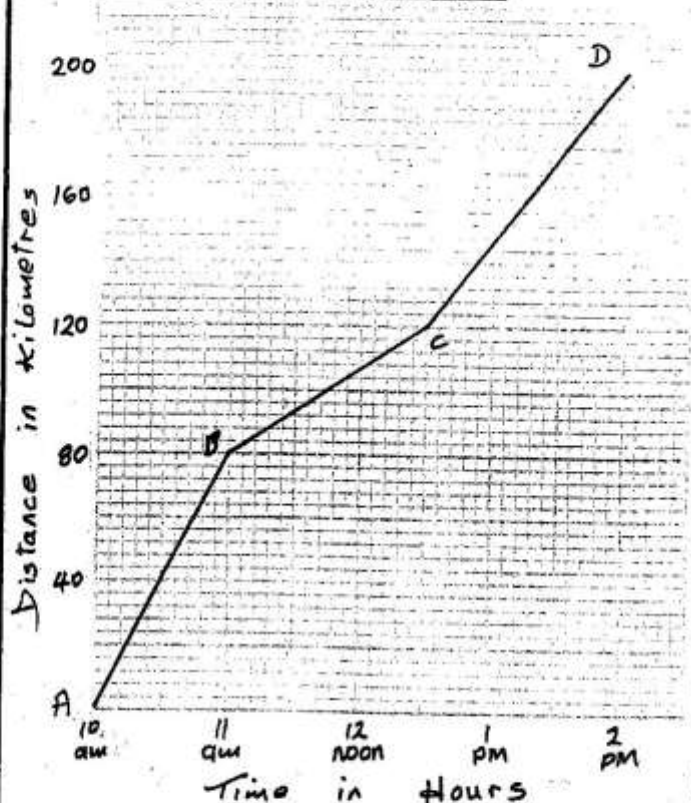
- A. 16m                              B. 18m  
C. 24m                              D. 36m



43. A right angled triangle has one of short sides measuring 16cm and a hypotenus of 34cm. What is its area?
- A. 272cm                      B. 480cm<sup>2</sup>  
 C. 240cm<sup>2</sup>                     D. 120cm<sup>2</sup>
44. A salesman is paid a salary of Shs. 75,000.00. He is also given  $7\frac{1}{2}\%$  commission on goods sold above Shs. 15,000.00. How much did he earn on commission in a month he sold goods worth Shs. 750,000.00?
- A. Shs 12 000.00  
 B. Shs 5, 625. 00  
 C. Shs 13, 125.00  
 D. Shs 4, 500.00
45. What is the value of  $1\frac{3}{4} + 3\frac{1}{4} + 2\frac{1}{8}$ ?
- A.  $10\frac{5}{8}$                         B.  $1\frac{5}{17}$   
 C.  $2\frac{6}{17}$                         D.  $3\frac{19}{68}$
46. Arrange 0.75,  $\frac{5}{8}$ , 60% and 76% in an ascending order?
- A. 60%, 0.75,  $\frac{5}{8}$ , 76%  
 B. 60%,  $\frac{5}{8}$ , 0.75, 76%  
 C.  $\frac{5}{8}$ , 60%, 0.75, 76%  
 D. 76%, 0.75,  $\frac{5}{8}$ , 60%
47. The mean age of six pupils is 10years. The age of five of the pupils are 15years, 9 years, 8 years, 7years and 12 years. What is the sum of their modal and median age?
- A. 18                              B.  $17\frac{1}{2}$   
 C. 21                                D. 17

48. Construct a parallelogram PQRS in which PQ = 7cm QR = 6cm and angle SPQ = 120°, measure diagonals QS.
- A. 11.4cm                      B. 6.4cm  
 C. 11.2cm                      D. 6.6cm
49. Menengere gave 0.25 of his land to his son and 0.3 to his daughter and was left with the rest of the land. What was the ratio of the piece he was left with to that he gave out?
- A. 3 : 7                            B. 9 : 11  
 C. 1 : 4                            D. 11 : 9

The graph below shows a vehicle's journey between town A and D.



50. What was the speed between town B and C in km/hr?
- A. 20                              B.  $23\frac{1}{3}$   
 C. 20                                D.  $26\frac{2}{3}$