

# STD 8 - YEAR 2016

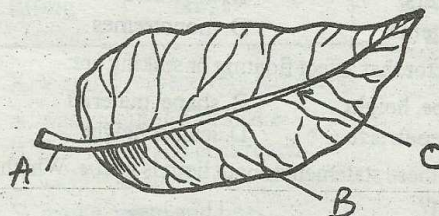
## SCIENCE

### READ THESE INSTRUCTIONS CAREFULLY

1. Use only an ordinary pencil.
  2. Make sure that you have written on the answer sheet:-  
(I) YOUR NAME (II) NAME OF YOUR SCHOOL
  3. For each question show the correct answer by drawing line in the brackets in which the letter you have chosen is written.
- Time: 1 Hr 40 Mins*

1. Which one of the following is **NOT** correctly matched with its function?  
A. Reproductive system - male and female organs  
B. Excretory system - skin, lungs, kidney  
C. Breathing system - bronchi, liver, lungs  
D. Digestive system - stomach, intestine, rectum
2. Which one of the following is a function of amniotic fluid?  
A. Protect the umbilical cord from injury  
B. Protect the foetus from shock and injury  
C. Protects the womb and the placenta  
D. Protect the placenta from damages
3. Boniface noted the following features on his way home.  
(i) Has gills to breath  
(ii) Have five or more pairs of jointed legs  
(iii) Have two pairs of antennae  
It is likely he saw a:-  
A. urchin                      B. myriapods  
C. arachids                    D. crustaceans
4. Which is the third largest planet in the solar system?  
A. Jupiter                      B. Uranus  
C. Neptune                    D. Saturn
5. Chemical used in dips and sprays are known as:-  
A. herbicides  
B. acaricides  
C. pesticides  
D. fungicides
6. Three of the following fungi are useful in various ways. Which one is **NOT** useful?  
A. Yeast  
B. Penicillin  
C. Mildew  
D. Mushroom

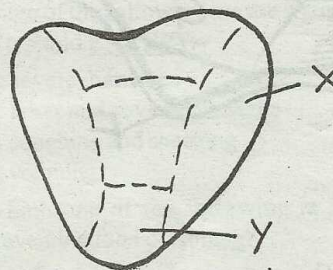
7. Name the parts labelled.



A, B and C are:-

- A. Leaf blade, lamina and leaf vein
  - B. Leaf stalk, leaf vein and leaf blade
  - C. Lamina, leaf vein and petiole
  - D. Petiole, lamina and leaf vein
8. Which of the following **CORRECTLY** shows the path taken by sperms from testis?  
A. Epididymis - ureter - spermduct  
B. Spermduct - epididymis - urethra  
C. Epididymis - spermduct - urethra  
D. Spermduct - urethra - epididymis

9.



The parts of the tongue labelled X and Y sense the taste:-

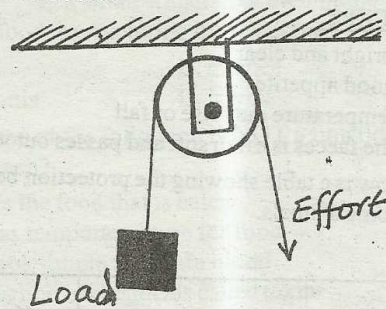
- A. sour and bitter                      B. sweet, salty and sour
- C. bitter, sour and sweet              D. sweet and sour

STD 8 - SCIENCE

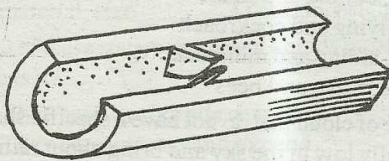




37. Which one of the following statements about the machine is false?



- A. The load distance is equal to the effort distance  
 B. The load is twice the effort used  
 C. The load is equal to the effort used  
 D. The load moves in opposite direction
38. Which one of the following is the name given to the fertilized ovum that has implanted on the uterine wall?  
 A. Foetus B. Zygote C. Embryo D. Egg
39. The diagram below shows a blood vessel.

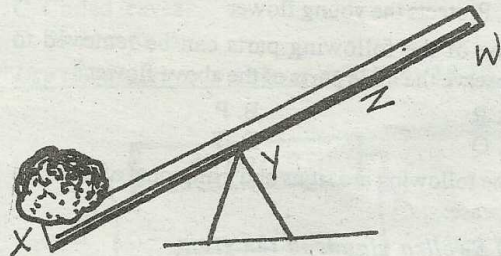


- Which of the following is likely to be the vessel shown above?  
 A. Aorta B. Pulmonary artery  
 C. Valve D. Venacava
40. Quarantine is used to \_\_\_\_\_  
 A. prevent all animal diseases  
 B. treat highly contagious livestock diseases  
 C. gives animals immunity against diseases  
 D. control high contagious livestock diseases
41. Which one of the following is **NOT** a disadvantage of friction?  
 A. Stops movement when necessary  
 B. Produces unwanted heat  
 C. Make work difficult  
 D. Wears out surfaces
42. One of the following animal feeds is preserved in its original colour. Which one?  
 A. Pellets B. Marsh C. Hay D. Silage
43. Which one of the following is a sign of good health in plants?  
 A. Variegated leaf B. Stunted growth  
 C. Spots and streaks D. Wilting

44. The following are plants nutrients. Which one is a macro-nutrient?

A. Manganese B. Iron C. Zinc D. Magnesium

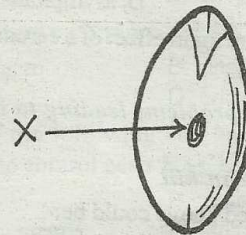
45. The diagram below shows a lever at work.



It is true to say that:-

- A. moving Y towards X makes work easier  
 B. increasing distance Y W makes work difficult  
 C. shortening distance X Y has no effect  
 D. less effort is needed by shortening by Y W

46. The diagram below shows a bean seed.



The diagram labelled X is for:-

- A. an injury to the seed  
 B. entry of air and water  
 C. attachment of seed to fruit wall  
 D. attachment of fruit to fruit wall
47. Examples of storage pests are:-  
 A. rats and weevils  
 B. weevils and weaver birds  
 C. cutworms and plants  
 D. rats and aphids
48. Which one of the following is a non-renewable source of energy?  
 A. Kerosene B. Wind C. Sun D. Biogas
49. The liquid part of blood is called:-  
 A. plasma B. red blood  
 C. white blood cells D. platelets
50. Which one of the following is the **BEST** material for making a lighting arrester?  
 A. Copper B. Zinc C. Bronze D. Iron