

STD 7 - YEAR 2016

SCIENCE

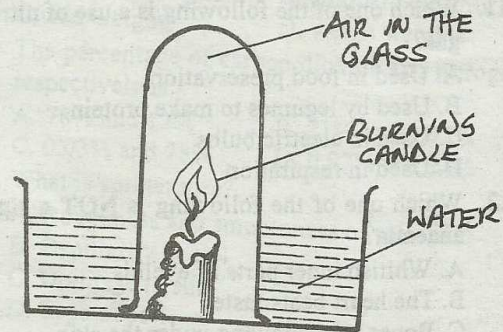
Time 1Hr 40Mins

READ THESE INSTRUCTIONS CAREFULLY

1. Use only an ordinary pencil.
2. Make sure that you have written on the answer sheet:-
(I) YOUR NAME (II) NAME OF YOUR SCHOOL
3. For each question show the correct answer by drawing a line in the brackets in which the letter you have chosen is written.

1. The following are immunizable diseases **EXCEPT:-**
 - A. malaria
 - B. T.B
 - C. Polio
 - D. Measles
2. HIV infection works in stages. There are four stages of infection. Which stage is one **LIKELY** to test negative?
 - A. Full blown
 - B. Symptomatic
 - C. Incubation
 - D. Window period
3. In classification of animals. Animals are classified into vertebrates and invertebrates. Which of the following groups is made up of vertebrates only?
 - A. Spider, snail, cow
 - B. frog, dog, lion
 - C. slug, snail, centipede
 - D. Monkey, snail, slug
4. The following plants grow in dry places **EXCEPT:-**
 - A. cactus
 - B. acacia
 - C. reeds
 - D. eucalyptus trees
5. Which group of food protect the body from diseases?
 - A. Vitamins
 - B: Carbohydrates
 - C. Proteins
 - D. Body building

6. Standard six pupils carried out these experiment. What were they investigating?



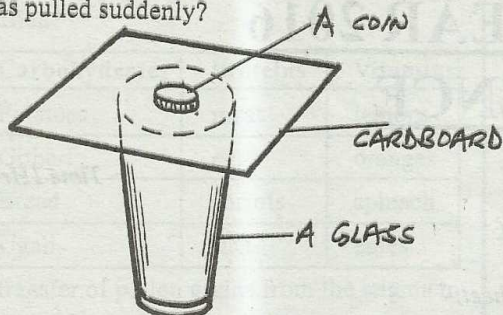
- A. Fire extinguishers
 - B. Uses of carbon dioxide
 - C. Oxygen and carbon dioxide
 - D. Use of oxygen in burning
7. The following are states of matter. Which one is **CORRECTLY** matched?

	Solid	Liquid	Gas
A.	definite volume	indefinite mass	definite mass
B.	definite shape	definite volume	definite mass
C.	definite mass	no definite mass	no definite shape
D.	indefinite volume	definite mass	indefinite mass

8. Which one is a function of fibre in the diet?
 - A. Digestion of food
 - B. Absorption of digested food
 - C. Removal of undigested food materials
 - D. Transport of absorbed food nutrients
9. The following drugs are obtained from plants **EXCEPT:-**
 - A. alcohol
 - B. cocaine
 - C. bhang
 - D. mandrax

STD 7 SCIENCE

10. The following activity was carried out by class 6 pupils from Rwanyambo Primary School. What happened to the coin if the piece of card board was pulled suddenly?



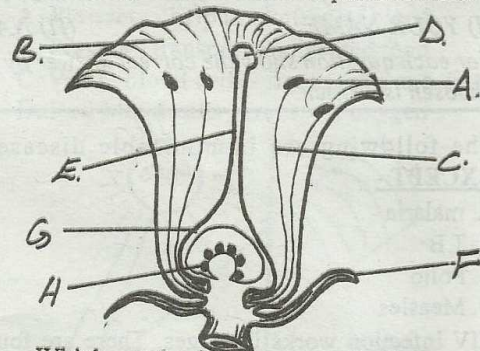
- A. The coin moved with the card board
 B. The glass fell down
 C. The coin fell besides the glass
 D. The coin fell in the glass
11. Which one of the following is a use of nitrogen gas?
 A. Used in food preservation
 B. Used by legumes to make protein
 C. Used in electric bulbs
 D. Used in respiration
12. Which one of the following is **NOT** a sign of anaemia?
 A. Whitish inner parts of eyelids
 B. The heart beats faster
 C. Bones start showing under the skin
 D. Person gets tired quickly
13. Which one of the following animals in the table below is **WRONGLY** classified?

	Reptiles	Mammals	Amphibians	Birds
A.	Snake	whale	lizard	dove
B.	Tortoise	bat	frog	hawk
C.	Turtle	man	newt	crow
D.	Crocodile	ant eater	toad	flamingo

14. Which soil has the highest water retention capacity?
 A. Sand
 B. Loam
 C. Clay and loam
 D. Clay
15. The type of soil erosion where water removes the top soil leading to formation of small channels is called:-
 A. gully erosion
 B. rill erosion
 C. sheet erosion
 D. splash erosion

16. Gases have definite _____
 A. volume and shape
 B. mass and volume
 C. mass and no definite shape
 D. volume and no definite mass

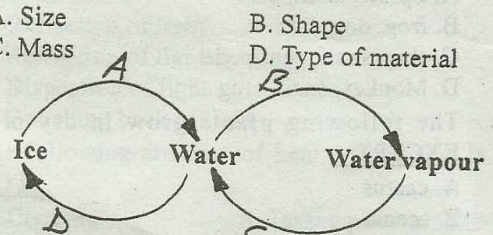
17. Which function is common to both roots and stems?
 A. Storage of food
 B. Absorption of water and mineral salts
 C. To anchor the plant
 D. Food transport from leaves
18. The diagram below shows parts of a flower.



Which are the female parts of a flower?

- A. A, D, C and F
 B. B, C, F and G
 C. G, H, C and D
 D. D, E, G and H
19. Which part of seed is **WRONGLY** matched with its function?
 A. Hilum - where seed is attached to the fruit
 B. Micropyle - protects the seed
 C. Testa - protects inner parts of seed
 D. Cotyledons - seed leaves
20. Which among the following do not affect floating and sinking?
 A. Size
 B. Shape
 C. Mass
 D. Type of material

21.



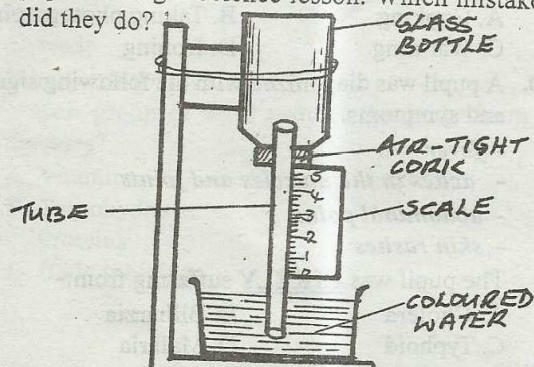
Which letter above represents freezing?

- A. D
 B. A
 C. C
 D. B
22. Which one of the following substances have no definite shape but has a definite volume?
 A. Air
 B. Sand
 C. Wood
 D. Milk
23. Which one of the following is **NOT** a special sound?
 A. A car hooting
 B. Soft music
 C. People screaming
 D. A church bell ringing

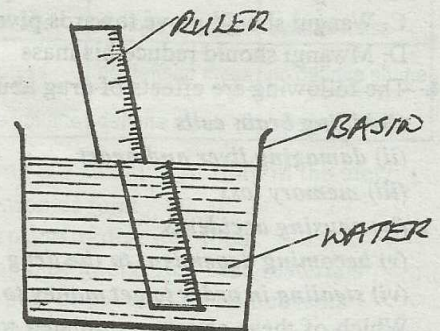
24. Which one of the following weather conditions would make clothes dry fastest?
 A. Hot and calm B. Hot and humid
 C. Hot and windy D. Hot and dry
25. Which of the following is a method of maintaining metallic parts of a tool?
 A. Greasing and oiling
 B. Sharpening
 C. Repairing broken handles
 D. Storing them in a dry place
26. The teeth shown below is called _____



- A. incisor B. canines
 C. Molar D. premolar
27. Three of the following takes place in the stomach during digestion. Which one **DOES NOT**?
 A. Proteins are digested
 B. Digested food is absorbed
 C. Hydrochloric acid is added to the food
 D. Gastric juice mixes with the food
28. Which of the following blood vessels is also called the main artery?
 A. Pulmonary artery B. Venacava
 C. Aorta D. Pulmonary vein
29. Which one of the following is **NOT** a recreation activity done on water?
 A. Cleaning B. Fishing
 C. Swimming D. Sailing
30. Which of the following diseases can be controlled by wearing gumboots?
 A. Chorea B. Dysentery
 C. Typhoid D. Bilharzia
31. The instrument drawn below was made by Std 5 pupils during a Science lesson. Which mistake did they do?



- A. Using a tight cork
 B. labelling the scale wrongly
 C. using a narrow tube
 D. using coloured water
32. Which of the following materials is **NOT** used when modelling a solar system?
 A. Pins or thorns B. Clay or plasticine
 C. A bottle and scale D. A soft board
33. The face of the moon that occurs immediately after new moon is:-
 A. 1st crescent B. 1st gibbous
 C. Last gibbous D. last crescent
34. Which one of the following is **NOT** a tuber crop?
 A. Yam B. Carrot
 C. Cassava D. Pumpkin
35. Standard five pupils made a beam balance to:
 A. measure weights B. compare weights
 C. add weights D. weigh weights
36. The percentage of carbon dioxide and nitrogen respectively is:-
 A. 78% and 12% B. 21% and 0.03%
 C. 0.03% and 78% D. 0.97% and 21%
37. What is soil texture?
 A. Roughness and smoothness of soil
 B. Capillarity in soil
 C. Drainage in soil
 D. Type of soil
38. Materials that allow light to pass through them but one cannot see through them are called:-
 A. transparent
 B. transparent and opaque
 C. opaque
 D. translucent
39. The following diagram was used to investigate a certain aspect of light. What were the pupils investigating?

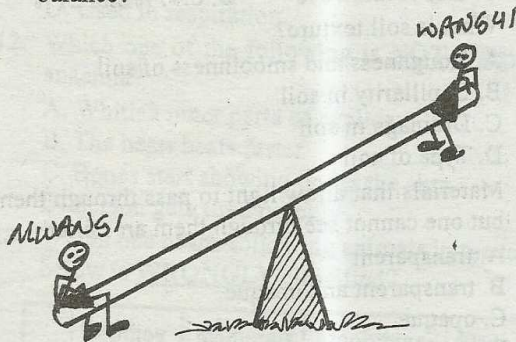


- A. reflection of light B. refraction of light
 C. transfer of light D. dispersion of light

40. The table below shows classification of foods in the three main groups. Which one is wrongly classified?

	Carbohydrates	Proteins	Vitamins
A.	Potatoes	meat	lemons
B.	Githeri	eggs	oranges
C.	Bread	carrots	spinach
D.	Ugali	fish	kales

41. The transfer of pollen grains from the stigma to the ovary is known as:-
 A. fertilization B. cross pollination
 C. self pollination D. germination
42. The following are methods of rotational grazing. Which one is **NOT**?
 A. Strip grazing B. Paddockging
 C. Tethering D. Stall feeding
43. Mwangi and Wangui wanted to balance on a seesaw: If Mwangi was 20kg heavier than Wangui, what would they have done in order to balance?



- A. Mwangi to sit away from the pivot
 B. Wangui should move away from pivot
 C. Wangui should move towards pivot
 D. Mwangi should reduce his mass
44. The following are effects of drug abuse.
 (i) *killing brain cells*
 (ii) *damaging liver and heart*
 (iii) *memory loss*
 (iv) *causing accidents*
 (v) *becoming dependent to the drug*
 (vi) *stealing in order to get money to buy drugs*
 Which of these effects are related to health of the person abusing drug?
 A. (i), (iv), (iii) B. (ii), (iv), (iii)
 C. (i), (ii), (iii) D. (iii), (iv), (vi)

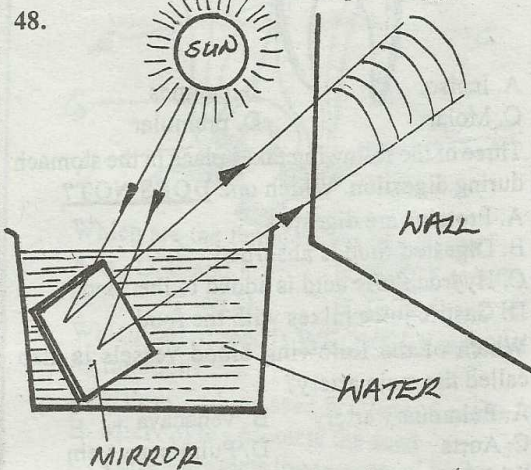
45. The mammalian heart is related to veins in that:-
 A. they both have valves
 B. oxygenated blood flows in them
 C. de-oxygenated blood flows in them only
 D. the two pumps blood

46. Drugs can be classified into the following groups **EXCEPT:-**

- A. curative B. preventive
 C. pain killers D. sleeping pills

47. Which of the following components of blood is **WRONGLY** matched with its functions?

- A. **Platelets** - help in clotting of blood
 B. **Plasma** - transport undigested food
 C. **White blood cells** - fight germs and diseases
 D. **Red blood cells** - transport oxygen



The experiment above was set up by Std 6 pupils. What were they likely to have been investigating?

- A. Reflection of light
 B. Refraction of light
 C. Dispersion of light
 D. Bouncing back of light

49. The following are uses of heat. Which one is **NOT**?

- A. Cooking B. Taking photographs
 C. Warming D. Ironing

50. A pupil was diagnosed with the following signs and symptoms.

- fever
- aches in the muscles and joints
- abdominal pains
- skin rashes

The pupil was **LIKELY** suffering from:-

- A. Cholera B. Bilharzia
 C. Typhoid D. Malaria